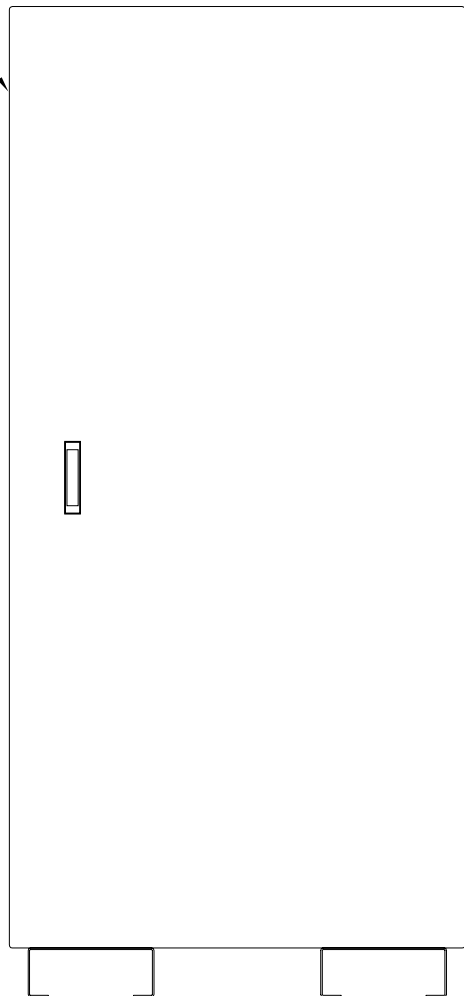
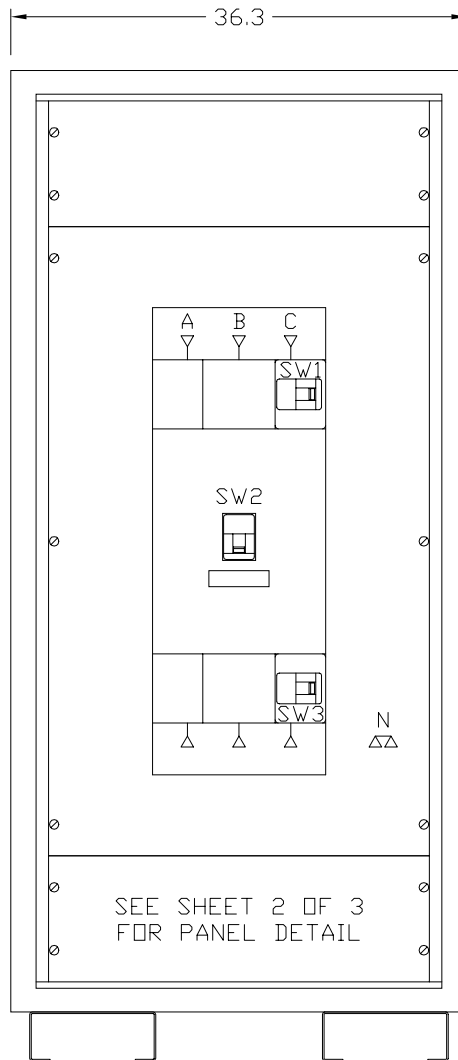


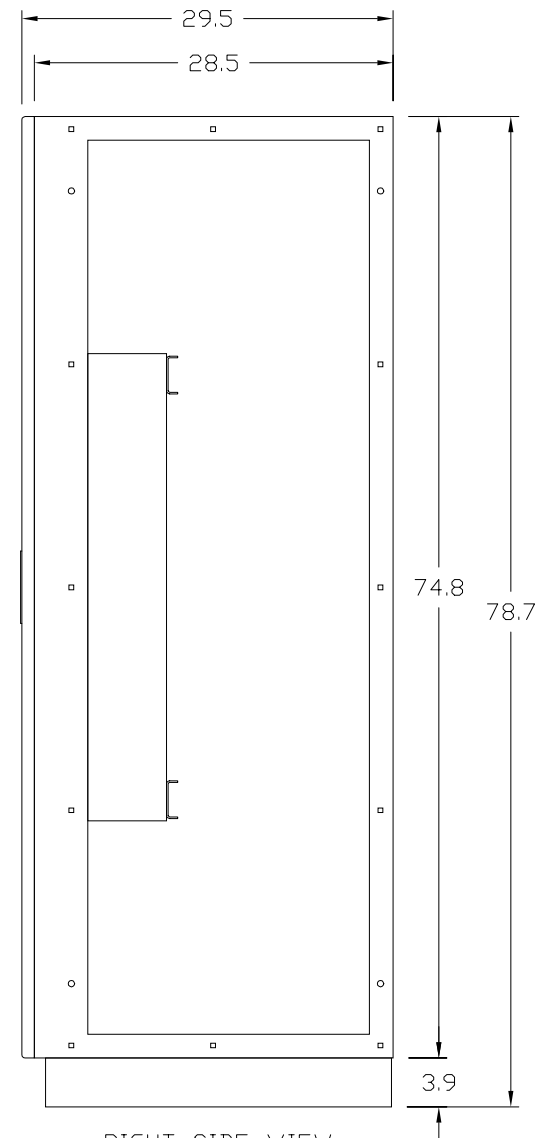
REMOVABLE LEFT
SIDE COVER



FRONT VIEW
DOOR SHOWN



FRONT VIEW
DOOR REMOVED



RIGHT SIDE VIEW
SIDE COVER REMOVED

This Document Contains Proprietary and Confidential Information.
Duplication, reproduction or use of this document or its contents in any form other than as expressly permitted by Kinney Electrical Mfg. Co., is prohibited.

MITSUBISHI ELECTRIC
VERNON HILLS, ILLINOIS

REVISIONS

PART NO.: SEE TABLE

DESCRIPTION: 3 BREAKER 9700 SERIES MBP PANEL - 400 AMP MAX.

MEAU APPROVED: *gma*

KINNEY APPROVED: *RFM*

REV.: *

DATE: 11-1-2000

CAD FILE:

DRAWING NO.:

SHEET:

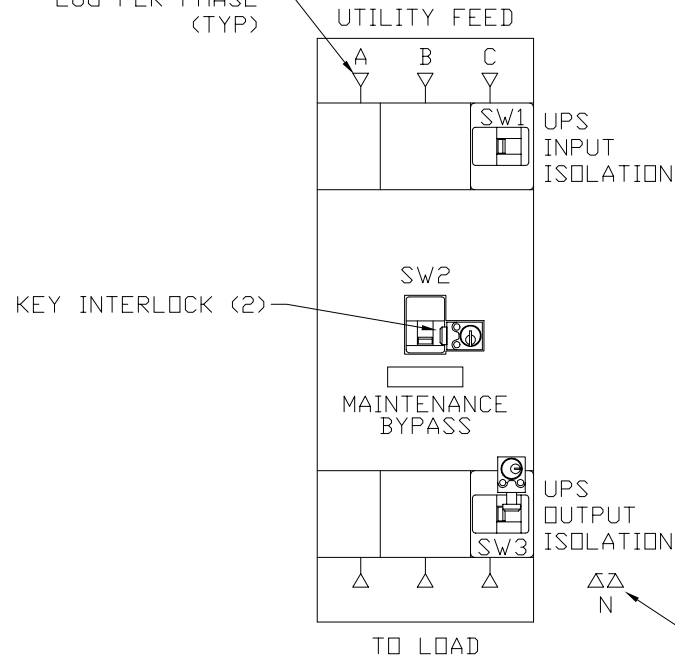
DRAWN BY: RFM

MBF97000400A02

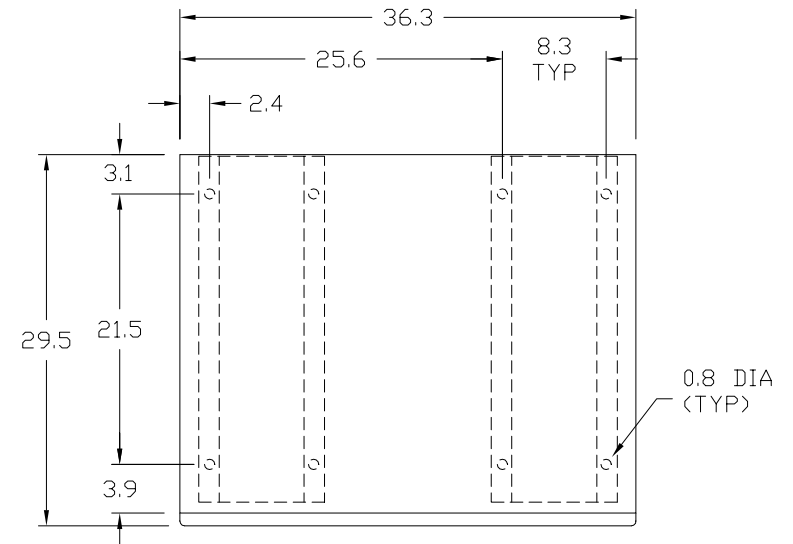
M0000132

1 OF 3

400 AMP M.L.D.
W/ (1) #4-600MCM
LUG PER PHASE
(TYP)



PANEL WITH INTERLOCKS



PLAN VIEW
ANCHOR DETAIL

This Document Contains Proprietary and Confidential Information.
Duplication, reproduction or use of this document or its contents in any form
other than as expressly permitted by Kinney Electrical Mfg. Co., is prohibited.

MITSUBISHI ELECTRIC
VERNON HILLS, ILLINOIS

REVISIONS

PART NO.: SEE TABLE

DESCRIPTION: 3 BREAKER 9700 SERIES MBP PANEL - 400 AMP MAX.

MEAU APPROVED: *gma*

KINNEY APPROVED: *RFM*

REV.: *

DATE: 11-1-2000

CAD FILE:

DRAWING NO.:

SHEET:

DRAWN BY: RFM

MBF97000400A02

M0000132

2 OF 3

3 BREAKER MAINTENANCE BYPASS PANEL (MBP) 100-400 AMPERES

| PART NUMBER | UPS SERIES | KVA | BREAKER TYPE | AMPERES | SERVICE | A. I. C. RATING |
|--------------------|------------|-----|--------------|---------|----------|-----------------|
| FB973-CDP-350-208N | 9700/9800 | 100 | KD | 350 | 208/120V | 65,000 |
| FB973-CDP-350-480N | 9700/9800 | 225 | KD | 350 | 480/277V | 35,000 |
| | | | | | | |
| | | | | | | |
| FB973-CDP-300-600N | 9700/9800 | 225 | KD | 300 | 600V | 25,000 |

| A. I. C. RATING | 208/120V | RATING CODE | 480/277V | RATING CODE | 600V | RATING CODE |
|-----------------|----------|-------------|----------|-------------|------|-------------|
| 35,000 | -- | -- | KD | -- | HKD | H |
| 50,000 | -- | -- | -- | -- | KDC | U |
| 65,000 | KD | -- | HKD | H | -- | -- |
| 100,000 | HKD | H | KDC | U | -- | -- |
| 200,000 | KDC | U | -- | -- | -- | -- |

ENCLOSURE NOTES:

ENCLOSURE: NEMA 1 (UL 50 LISTED ENCLOSURE).

BOX: 12 GAUGE PAINTED STEEL, CONTINUOUSLY WELDED SEAMS AND CORNERS, NO KNOCKOUTS.
 DOOR: 12 GAUGE PAINTED STEEL EQUIPPED WITH MITSUBISHI HANDLE WITH THREE POINT CATCH.
 FINISH: MITSUBISHI BEIGE POLYESTER POWDERCOAT APPLIED TO SURFACES TREATED WITH AN IRON
 PHOSPHATE AND CHROME FREE SEALER.

MAINTENANCE BYPASS PANEL NOTES:

KINNEY PANEL TYPE: CDP (UL 67 LISTED INTERIOR)

SERVICE: SEE TABLE ABOVE.

BUS : ELECTROLYTIC COPPER OF 98% CONDUCTIVITY, BASED ON 1000 AMPS PER SQUARE INCH DENSITY.

WIRE BENDING GUTTER: MEETS OR EXCEEDS NEC TABLES 373-6(a), 373-6(b).

BREAKERS: WESTINGHOUSE THERMAL-MAGNETIC, 400 AMP FRAME, 3 POLE, TRIP AS INDICATED:

SEE TABLE ABOVE FOR BREAKER TYPE, AMPERES, AND A.I.C. RATING.

BREAKER TERMINAL LUG: (2) 2/0-250MCM OR (1) 2/0-500MCM PER PHASE.

KEY INTERLOCK: KIRK TYPE F, BREAKERS ARE INTERLOCKED SO AT LEAST ONE BREAKER IS ON AT ANY GIVEN TIME.

PART NUMBER:

FB973-X X X-300-208 N

A.I.C. RATING OPTION

ACCESSORY OPTION 1

ACCESSORY OPTION 2

INTERLOCK OPTION

A.I.C. RATING CODES:

H - HIGH INTERRUPTING

U - ULTRA HIGH INTERRUPTING

INTERLOCK OPTION:

K - KEY INTERLOCK

N - NONE

ACCESSORY CODES:

- 1 - 1a/1b AUXILIARY SWITCH
2 - 2a/2b AUXILIARY SWITCH
3 - 24VDC UNDER VOLTAGE RELEASE
4 - 1m/1b ALARM/LOCKOUT SWITCH
5 - 1a/1b AUXILIARY & 1m/1b ALARM SWITCH

NOTES:

1. ACCESSORIES NORMALLY INSTALLED ON SW2.
2. PUT LOWEST CODE IN OPTION 1, i.e. 12, 24.

This Document Contains Proprietary and Confidential Information.
Duplication, reproduction or use of this document or its contents in any form other than as expressly permitted by Kinney Electrical Mfg. Co., is prohibited.

MITSUBISHI ELECTRIC
 VERNON HILLS, ILLINOIS

REVISIONS

PART NO.: SEE TABLE

DESCRIPTION: 3 BREAKER 9700 SERIES MBP PANEL - 400 AMP MAX.

MEAU APPROVED:

KINNEY

CAD FILE:

ED: RFM

DRAWING NO.:

REV.: 2
SHEET:
3 OF 3

DRAWN BY: RFM

MBF97000400A02

M0000132

3 OF 3