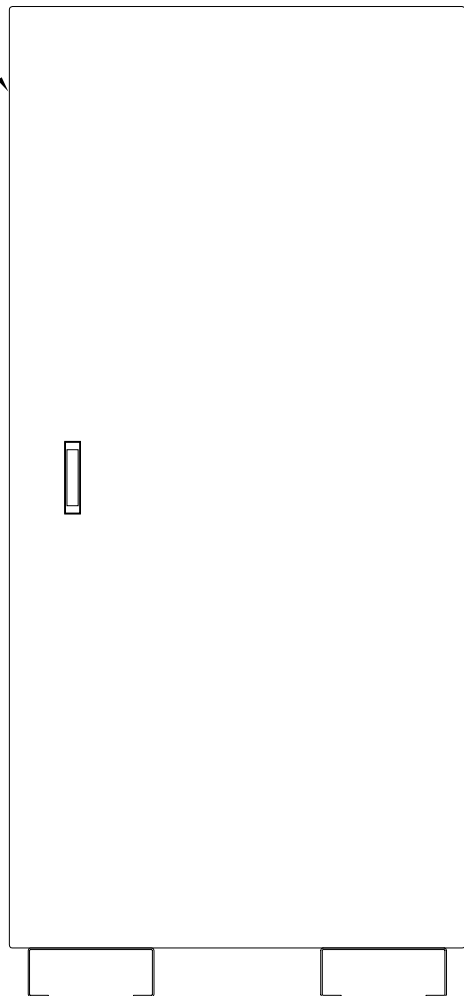
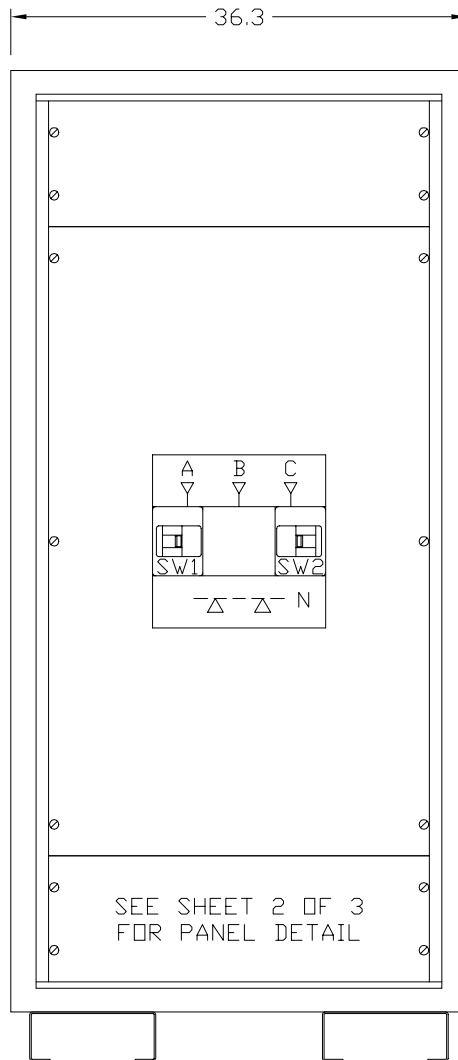


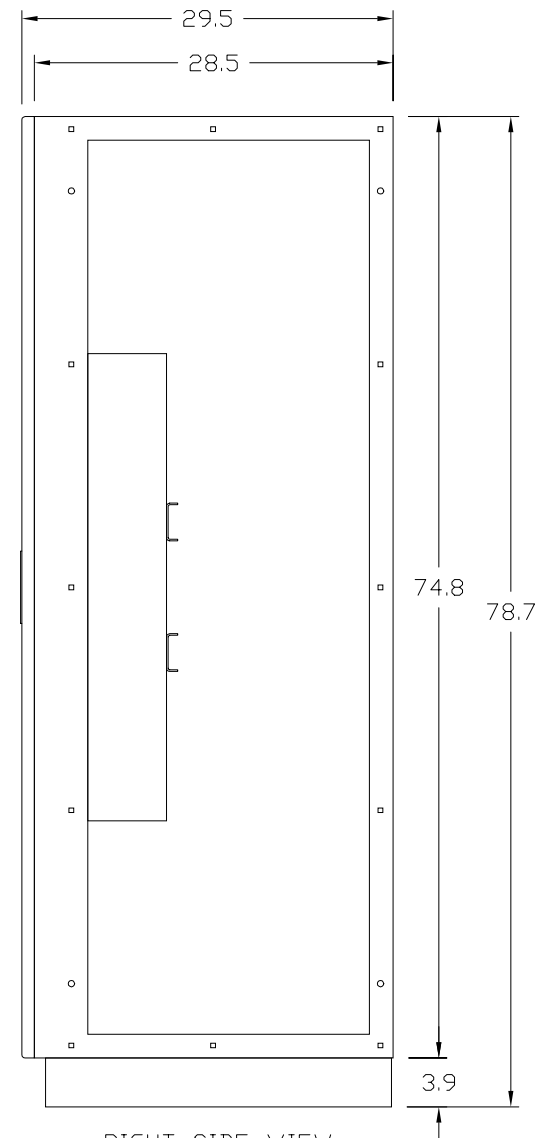
REMOVABLE LEFT
SIDE COVER



FRONT VIEW
DOOR SHOWN



FRONT VIEW
DOOR REMOVED



RIGHT SIDE VIEW
SIDE COVER REMOVED

This Document Contains Proprietary and Confidential Information.
Duplication, reproduction or use of this document or its contents in any form
other than as expressly permitted by Kinney Electrical Mfg. Co., is prohibited.

MITSUBISHI ELECTRIC
VERNON HILLS, ILLINOIS

REVISIONS

PART NO.: SEE TABLE

DESCRIPTION: 2 BREAKER 9700 SERIES MBP PANEL - 400 AMP MAX.

MEAU APPROVED: *gma*

KINNEY APPROVED: *RFM*

REV.: *

DATE: 11-1-2000

CAD FILE:

DRAWING NO.:

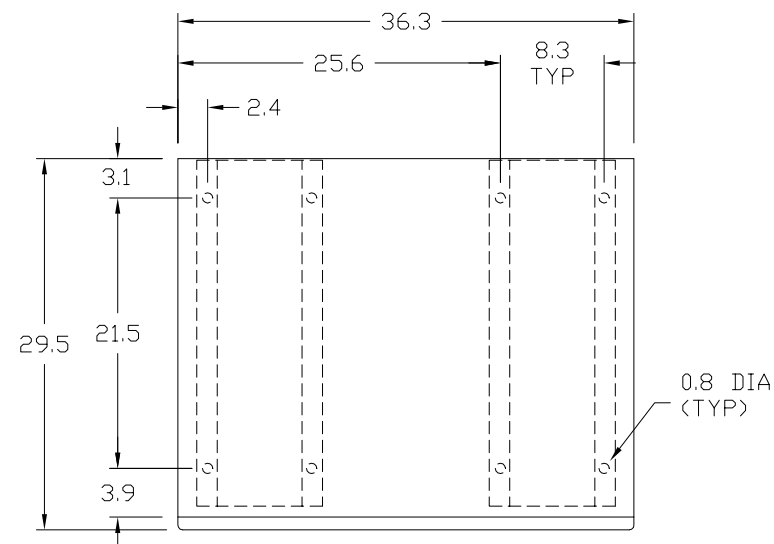
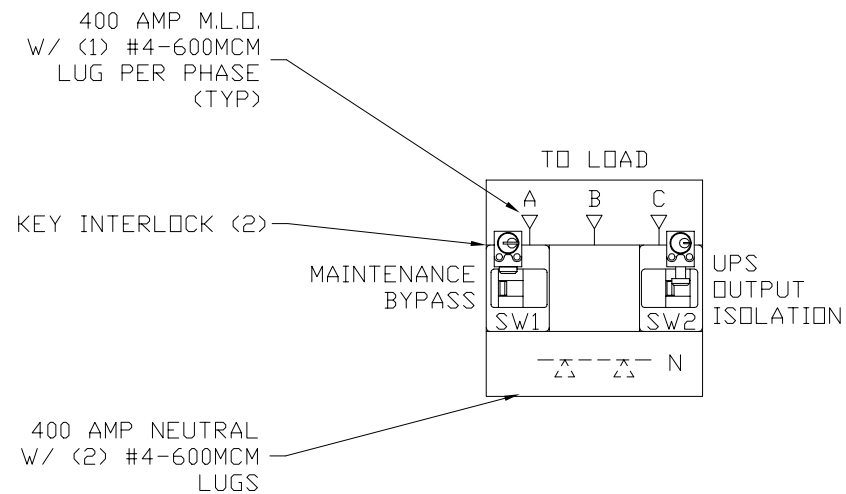
SHEET:

DRAWN BY: RFM

MBF97000400A01

M0000131

1 OF 3



PLAN VIEW
ANCHOR DETAIL

This Document Contains Proprietary and Confidential Information.
Duplication, reproduction or use of this document or its contents in any form
other than as expressly permitted by Kinney Electrical Mfg. Co., is prohibited.

MITSUBISHI ELECTRIC
VERNON HILLS, ILLINOIS

REVISIONS

PART NO.: SEE TABLE

DESCRIPTION: 2 BREAKER 9700 SERIES MBP PANEL - 400 AMP MAX.

MEAU APPROVED: *gma*

KINNEY APPROVED: *RFM*

REV.: *

DATE: 11-1-2000

CAD FILE:

DRAWING NO.:

SHEET:

DRAWN BY: RFM

MBF97000400A01

M0000131

2 OF 3

2 BREAKER MAINTENANCE BYPASS PANEL (MBP) 100-400 AMPERES						
PART NUMBER	UPS SERIES	KVA	BREAKER TYPE	AMPERES	SERVICE	A. I. C. RATING
FB972-CDP-350-208N	9700/9800	100	KD	350	208/120V	65,000
FB972-CDP-350-480N	9700/9800	225	KD	350	480/277V	35,000
FB972-CDP-300-600N	9700/9800	225	KD	300	600V	25,000

A. I. C. RATING	208/120V	RATING CODE	480/277V	RATING CODE	600V	RATING CODE
35,000	--	--	KD	--	HKD	H
50,000	--	--	--	--	KDC	U
65,000	KD	--	HKD	H	--	--
100,000	HKD	H	KDC	U	--	--
200,000	KDC	U	--	--	--	--

ENCLOSURE: NEMA 1 (UL 50 LISTED ENCLOSURE).
BOX: 12 GAUGE PAINTED STEEL, CONTINUOUSLY WELDED SEAMS AND CORNERS, NO KNOCKOUTS.
DOOR: 12 GAUGE PAINTED STEEL EQUIPPED WITH MITSUBISHI HANDLE WITH THREE POINT CATCH.
FINISH: MITSUBISHI BEIGE POLYESTER POWDERCOAT APPLIED TO SURFACES TREATED WITH AN IRON PHOSPHATE AND CHROME FREE SEALER.

KINNEY PANEL TYPE: CDP (UL 67 LISTED INTERIOR)
SERVICE: SEE TABLE ABOVE.
BUS : ELECTROLYTIC COPPER OF 98% CONDUCTIVITY, BASED ON 1000 AMPS PER SQUARE INCH DENSITY.
WIRE BENDING GUTTER: MEETS OR EXCEEDS NEC TABLES 373-6(a), 373-6(b).
BREAKERS: WESTINGHOUSE THERMAL-MAGNETIC, 400 AMP FRAME, 3 POLE, TRIP AS INDICATED:
 SEE TABLE ABOVE FOR BREAKER TYPE, AMPERES, AND A.I.C. RATING.
BREAKER TERMINAL LUG: (2) 2/0-250MCM OR (1) 2/0-500MCM PER PHASE.
KEY INTERLOCK: KIRK TYPE F, BREAKERS ARE INTERLOCKED SO AT LEAST ONE BREAKER IS ON AT ANY GIVEN TIME.

<p><u>This Document Contains Proprietary and Confidential Information.</u> Duplication, reproduction or use of this document or its contents in any form other than as expressly permitted by Kinney Electrical Mfg. Co., is prohibited.</p>		
<p style="text-align: center;">REVISIONS</p>		
1	REVISED BKR. NOTES 5-24-01	
2	REVISED LUG NOTES 2/25/02	

<p style="text-align: center;"> MITSUBISHI ELECTRIC </p> <p style="text-align: center;"> VERNON HILLS, ILLINOIS </p>			
PART NO.: SEE TABLE			
DESCRIPTION: 2 BREAKER 9700 SERIES MBP PANEL – 400 AMP MAX.			
MEAU APPROVED: <i>JMA</i>		KINNEY APPROVED: <i>RFM</i>	
DATE: 11-1-2000		REV.: 2	
DRAWN BY: RFM			
CAD FILE:		DRAWING NO.:	
MBF97000400A01		M0000131	
		SHEET:	
		3 OF 3	

FB972-X X X-300-208 N

ACCESSORY OPTION 1

ACCESSORY OPTION 2

INTERLOCK OPTION

H - HIGH INTERRUPTING
U - ULTRA HIGH INTERRUPTING

K - KEY INTERLOCK
N - NONE

1 - 1a/1b AUXILIARY SWITCH
2 - 2a/2b AUXILIARY SWITCH
3 - 24VDC UNDER VOLTAGE RELEASE
4 - 1m/1b ALARM/LOCKOUT SWITCH
5 - 1a/1b AUXILIARY & 1m/1b ALARM SWITCH

1. ACCESSORIES NORMALLY INSTALLED ON SW2.
2. PUT LOWEST CODE IN OPTION 1, i.e. 12, 24.