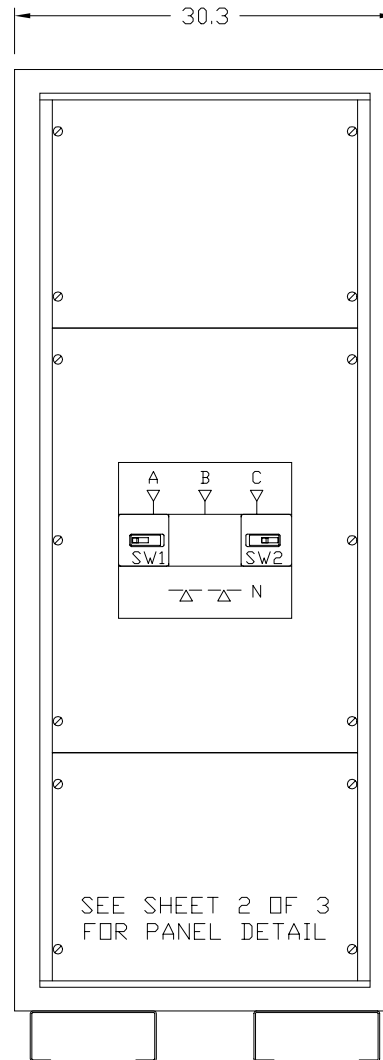
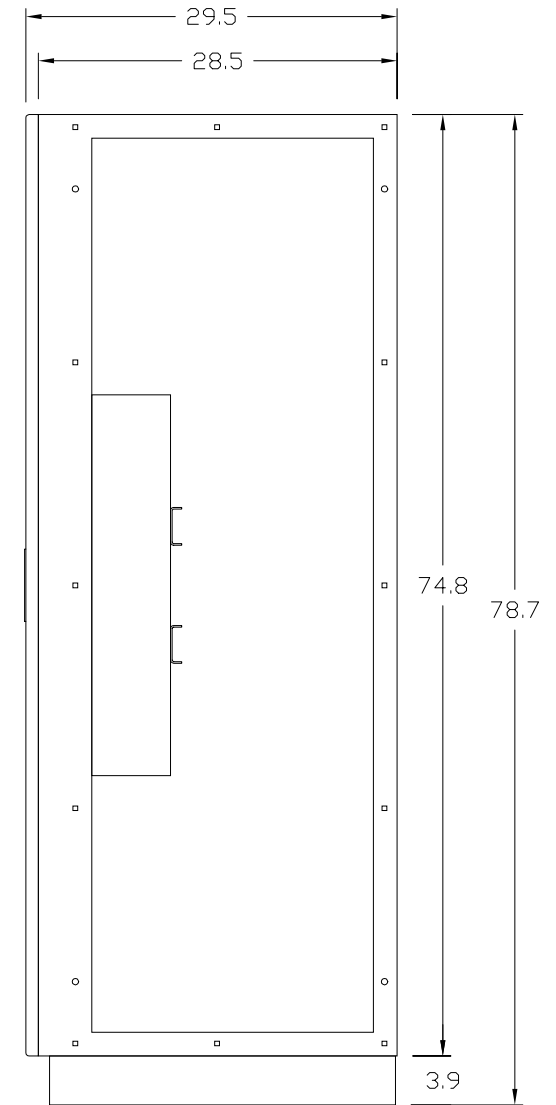


FRONT VIEW
DOOR SHOWN



FRONT VIEW
DOOR REMOVED



RIGHT SIDE VIEW
SIDE COVER REMOVED

This Document Contains Proprietary and Confidential Information.
Duplication, reproduction or use of this document or its contents in any form
other than as expressly permitted by Kinney Electrical Mfg. Co., is prohibited.

MITSUBISHI ELECTRIC
VERNON HILLS, ILLINOIS

REVISIONS

PART NO.: SEE TABLE

DESCRIPTION: 2 BREAKER 9700 SERIES MBP PANEL - 225 AMP MAX.

MEAU APPROVED: *gma*

KINNEY APPROVED: *RFM*

REV.: *

DATE: 11-1-2000

CAD FILE:

DRAWING NO.:

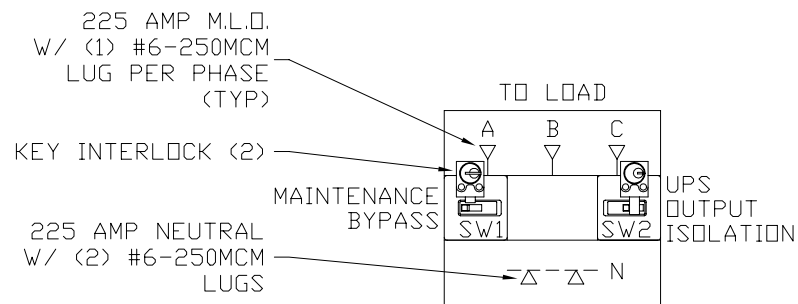
SHEET:

DRAWN BY: RFM

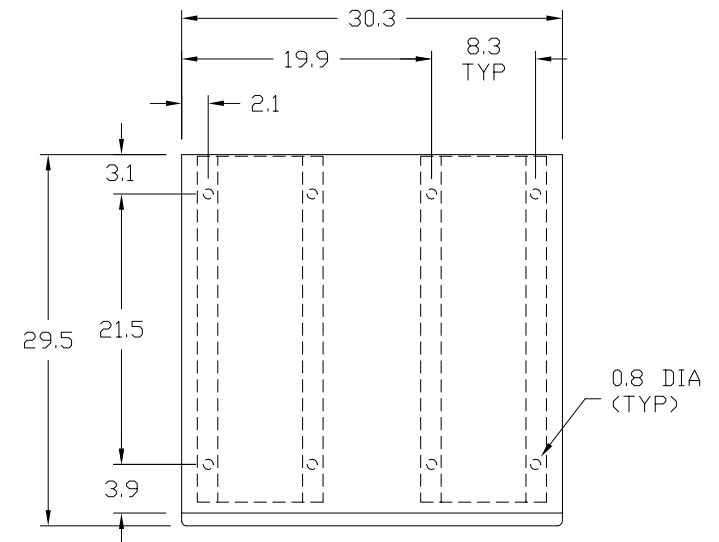
MBF97000225A01

M0000127

1 OF 3



PANEL WITH INTERLOCKS



PLAN VIEW
ANCHOR DETAIL

This Document Contains Proprietary and Confidential Information.
Duplication, reproduction or use of this document or its contents in any form
other than as expressly permitted by Kinney Electrical Mfg. Co., is prohibited.

MITSUBISHI ELECTRIC
VERNON HILLS, ILLINOIS

REVISIONS

PART NO.: SEE TABLE

DESCRIPTION: 2 BREAKER 9700 SERIES MBP PANEL - 225 AMP MAX.

MEAU APPROVED: *gma*

KINNEY APPROVED: *RFM*

REV.: *

DATE: 11-1-2000

CAD FILE:

DRAWING NO.:

SHEET:

DRAWN BY: RFM

MBF97000225A01

M0000127

2 OF 3

<div>2 BREAKER MAINTENANCE BYPASS PANEL (MBP) 15-225 AMPERES</div>							<div>PART NUMBER:<div>FB972-X X X-150-480 N</div><div>A.I.C. RATING OPTION</div><div>ACCESSORY OPTION 1</div><div>ACCESSORY OPTION 2</div><div>INTERLOCK OPTION</div></div>		
PART NUMBER	UPS SERIES	KVA	BREAKER TYPE	AMPERES	SERVICE	A. I. C. RATING			
FB972-CDP-150-480N	9700/9800	100	FD	150	480/277V	25,000			
FB972-CDP-225-480N	9700/9800	150	FD	225	480/277V	25,000			
FB972-CDP-125-600N	9700/9800	100	FD	125	600V	18,000			
FB972-CDP-200-600N	9700/9800	150	FD	200	600V	18,000			
A. I. C. RATING	208/120V	RATING CODE	480/277V	RATING CODE	600V	RATING CODE			
25,000	--	--	FD	--	HFD	H			
35,000	--	--	--	--	FDC	U			
65,000	ED	--	HFD	H	--	--			
100,000	EDH	H	FDC	U	--	--			
200,000	EDC	U	--	--	--	--			
<div>ENCLOSURE NOTES:</div> <div>ENCLOSURE: NEMA 1 (UL 50 LISTED ENCLOSURE).</div> <div>BOX: 12 GAUGE PAINTED STEEL, CONTINUOUSLY WELDED SEAMS AND CORNERS, NO KNOCKOUTS.</div> <div>DOOR: 12 GAUGE PAINTED STEEL EQUIPPED WITH MITSUBISHI HANDLE WITH THREE POINT CATCH.</div> <div>FINISH: MITSUBISHI BEIGE POLYESTER POWDERCOAT APPLIED TO SURFACES TREATED WITH AN IRON PHOSPHATE AND CHROME FREE SEALER.</div> <div>MAINTENANCE BYPASS PANEL NOTES:</div> <div>KINNEY PANEL TYPE: CDP (UL 67 LISTED INTERIOR)</div> <div>SERVICE: SEE TABLE ABOVE.</div> <div>BUS : ELECTROLYTIC COPPER OF 98% CONDUCTIVITY, BASED ON 1000 AMPS PER SQUARE INCH DENSITY.</div> <div>WIRE BENDING GUTTER: MEETS OR EXCEEDS NEC TABLES 373-6(a), 373-6(b).</div> <div>BREAKERS: WESTINGHOUSE THERMAL-MAGNETIC, 225 AMP FRAME, 3 POLE, TRIP AS INDICATED:</div> <div>SEE TABLE ABOVE FOR BREAKER TYPE, AMPERES, AND A.I.C. RATING.</div> <div>BREAKER TERMINAL LUG: (1) #4-4/0 PER PHASE.</div> <div>KEY INTERLOCK: KIRK TYPE F, BREAKERS ARE INTERLOCKED SO AT LEAST ONE BREAKER IS ON AT ANY GIVEN TIME.</div>									
<div>This Document Contains Proprietary and Confidential Information.</div> <div>Duplication, reproduction or use of this document or its contents in any form other than as expressly permitted by Kinney Electrical Mfg. Co., is prohibited.</div>							<div>MITSUBISHI ELECTRIC</div> <div>VERNON HILLS, ILLINOIS</div>		
REVISIONS							PART NO.: SEE TABLE		
1	REVISED BKR. NOTES 5-24-01						DESCRIPTION: 2 BREAKER 9700 SERIES MBP PANEL - 225 AMP MAX.		
				MEAU APPROVED: <i>Jma</i>		KINNEY APPROVED: <i>RFM</i>		REV.: 1	
				DATE: 11-1-2000		CAD FILE:	DRAWING NO.:	SHEET:	
				DRAWN BY: RFM		MBF97000225A01	M0000127	3 OF 3	