



INSTRUCTIONS

GEK-7395
Insert Booklet-GEK-7393

DC OPERATED TIMING RELAY

TYPE SAM11D21A AND UP

INTRODUCTION

These instructions are a supplement to instruction book GEK-7393 which is included in this book. The combination of the two form instructions for the 12SAM11D21A and up relays.

DESCRIPTION

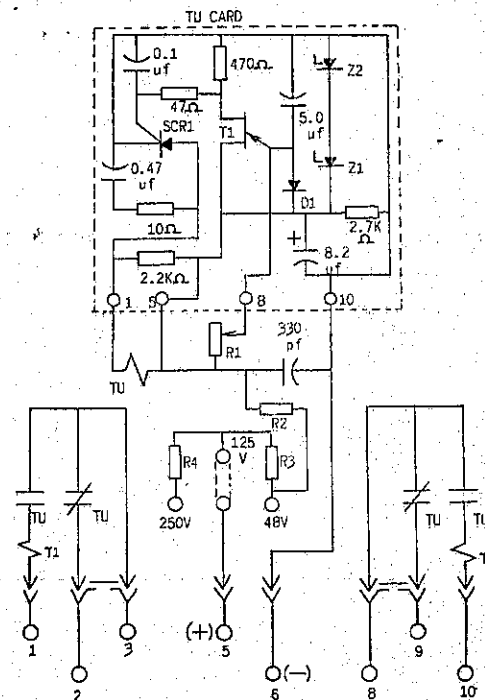
The type SAM relay covered by this instruction book is similar respectively to the SAM11B relay except for the addition of one target unit and different internal connections, see Figure 1 of this supplement.

These instructions do not purport to cover all details or variations in equipment nor to provide for every possible contingency to be met in connection with installation, operation or maintenance. Should further information be desired or should particular problems arise which are not covered sufficiently for the purchaser's purposes, the matter should be referred to the General Electric Company.

POWER SYSTEMS MANAGEMENT DEPARTMENT

GENERAL  ELECTRIC

PHILADELPHIA, PA.



5○= TIP NO. ON PRINTED CIRCUIT CARD

Fig. 1-Internal Connection For Relay Type SAM 11D21 and up Front View (208A2423)

| MODEL | FORM | | |
|--------------------|----------------|----------------|--|
| 12SAM11D(-) A | 21 | 22 | |
| VOLTS D.C. | 48/125/ 250 | 48/125/ 250 | |
| RESISTANCE IN OHMS | | | |
| TU COIL | 650 | 650 | |
| R1 | 0.5 MEG. | 1.5 MEG. | |
| R2 | 500 | 500 | |
| R3 | 1200 | 1200 | |
| R4 | 2000 | 2000 | |
| | | | |
| | | | |
| | | | |
| | | | |
| | | | |

Fig. 2-Internal Connection For Relay Type SAM (Front View) (208A2423-0)