



# INSTRUCTIONS

GEK- 33986  
Insert Booklet- 98320

D.C. AUXILIARY RELAY

TYPE NGA

MODEL 12NGA15Z(-)

## INTRODUCTION

This supplement in conjunction with GEI-98320 forms the instructions for this relay.

## DESCRIPTION

Relay model 12NGA15Z(-) is a back connected surface mounted auxiliary relay that has two transfer contacts. It is similar to relay model 12NGA15D(-) except:

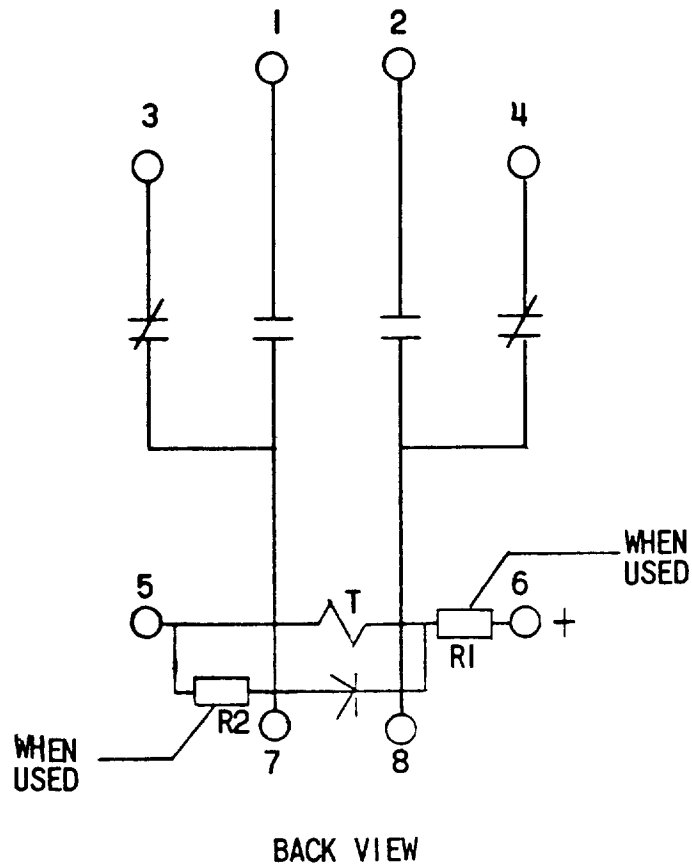
1. The internal connections are shown in Fig. 1 of this supplement.
2. The table in Figure 1 of this supplement shows the ratings, pick-up time and dropout time of the various forms of this relay model.

These instructions do not purport to cover all details or variations in equipment nor to provide for every possible contingency to be met in connection with installation, operation or maintenance. Should further information be desired or should particular problems arise which are not covered sufficiently for the purchaser's purposes, the matter should be referred to the General Electric Company.

POWER SYSTEMS MANAGEMENT DEPARTMENT

GENERAL  ELECTRIC

PHILADELPHIA, PA.



	DC VOLTS INTERMITTENT 10 (SEC.)	PICKUP TIME MILLISECONDS	DROPOUT TIME MILLISECONDS	OHMS		
				T	R1	R2
NGA15Z1	250	16	116 - 167	1000	3000	NONE
NGA15Z2	125	16	116 - 167	1000	1000	NONE
NGA15Z3	48	16	116 - 167	500	NONE	50
NGA15Z4	220	16	116 - 167	1000	3000	NONE

FIG. 1 (0227A7129-0) Sh. 1 Internal Connections Diagram For The NGA15Z Relay (Rear View)