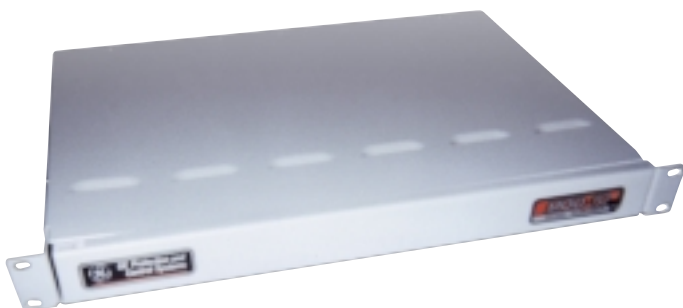


**High-speed multi-contact DC relays
to perform auxiliary functions on
AC and DC circuits.**



ESA

Multi-contact Auxiliary Relays

Application

- Contact manipulation

Protection and Control

- High-speed pickup and dropout
- Self-resetting

Features

- Four or Eight output relays
- Two Form-"C" contacts per relay
- 19" rack mounting with back connections

DESCRIPTION

The ESA is a high-speed, general purpose, self resetting relay. The ESA is housed in a 1.75" high 19" rack mount case with back connections. These auxiliary relays are available with either four or eight output relays. All models are continuously rated, have surge limiting diode circuits for the operating coils and have surge protection on all output contacts.

CONTACT RATING

The relay contacts will close and carry 30A per ANSI C37.90, and carry 5A continuously at 250 VAC and 30 VDC. The contacts can break maximum 5A resistive at 250 VAC and 30 VDC.

APPLICATION

The ESA can be used in any application where up to eight contacts/DC signals need to be converted to maximum two Form-"C" contacts, where high speed is a requirement. The pickup and dropout times at rated voltage are 4 msec. maximum. The relays are adjusted to pick up at 80% of rated DC voltage. The output contacts can be used in any AC or DC application where self resetting is desired.

BURDENS

The burdens for the DC coils are as follows:

Coil Group	Volts (DC)	Coil Resistance (Ω at 25°C \pm 10%)
04	48	1.07k Ω
11	110	5.05k Ω
12	125	5.85k Ω
22	220	21.7k Ω
25	250	22.7k Ω

ORDER CODE BREAKDOWN

ESA	**	D	*	B
ESA				Base unit
	04			48 VDC
	11			110 VDC
	12			125 VDC
	22			220 VDC
	25			250 VDC
		4		4 Relays
		8		8 Relays

19

**Online ordering is
available for this
product.**

See pages
15 - 18.

www.GEindustrial.com/pm

