


**control**

# INSTRUCTIONS

**CAUTION:** Before installing in a nuclear application, determine that the product is intended for such use.

## CR120YC SERIES A Undervoltage relay

### GENERAL INFORMATION

The CR120YC undervoltage relay provides protection against undervoltage conditions. Relays are available with either single or double pole contact arrangements and for line voltages from 115 through 600 V AC.

### INSTALLATION

1. Remove all packing from the relay.
2. Mount on vertical panel with 3 #10 screws per Figure 2
3. Connections should be made for the contact arrangement used per Figure 3.

### ADJUSTMENT

1. The undervoltage relay is shipped from the factory with the pickup and dropout adjusted. The unit may be re-adjusted by the following procedure:

**CAUTION: DO NOT ATTEMPT RE-ADJUSTMENT UNTIL ALL POWER HAS BEEN SHUT OFF.**

- a. Loosen potentiometer lock nuts.
- b. Increase pickup voltage by turning adjustment screw CW. Decrease by turning CCW. Dropout voltage is affected by pickup adjustment. Check setting by slowly increasing line voltage to measure pickup voltage.
- c. Increase dropout voltage by turning adjustment screw CCW. Decrease by turning CW. Pickup voltage is **not** affected by dropout adjustment. Check setting by slowly decreasing line voltage to measure dropout voltage.
- d. Tighten potentiometer lock nuts.

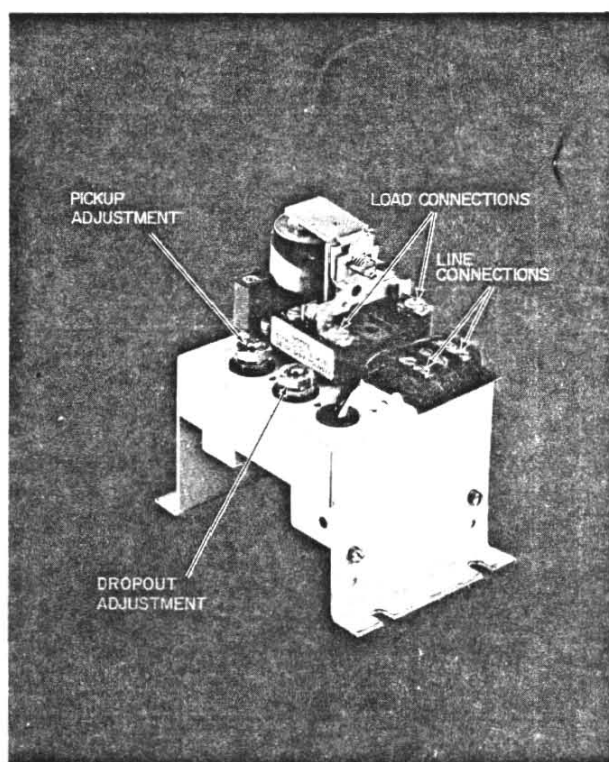


FIGURE 1

### CONTACT RATINGS

CONTACT ARRANGEMENT	CONTINUOUS CURRENT	MAX. AC VOLTAGE	HP RATING	
			115	230
SINGLE BREAK	10	600	1/2	1/2
DOUBLE BREAK	15	600	3/4	1

These instructions do not purport to cover all details or variations in equipment nor to provide for every possible contingency to be met in connection with installation, operation or maintenance. Should further information be desired or should particular problems arise which are not covered sufficiently for the purchaser's purposes, the matter should be referred to the nearest General Electric Sales Office.

**DIMENSIONS (for estimating only)**

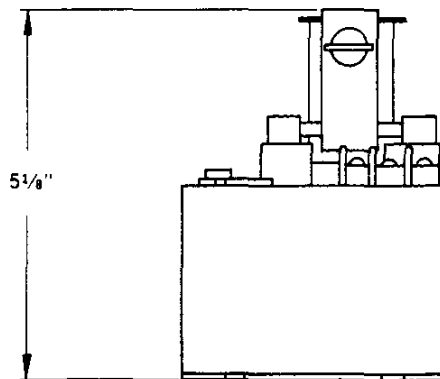
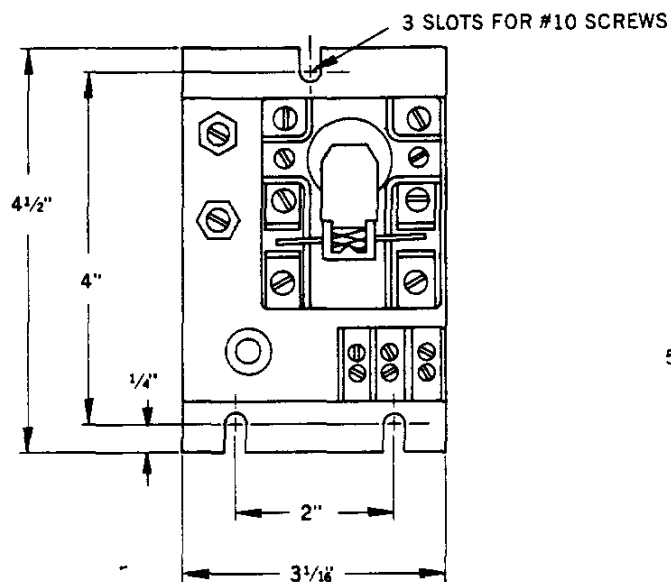


FIGURE 2

**CONNECTION DIAGRAMS.**

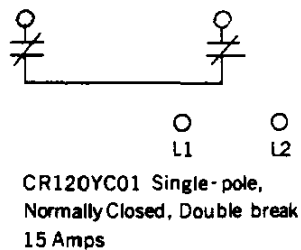
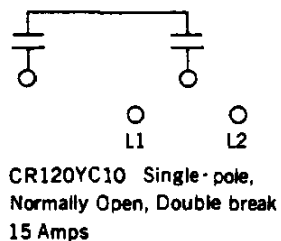
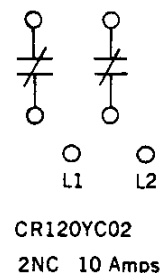
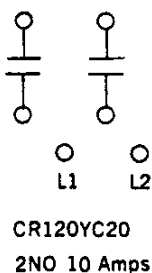
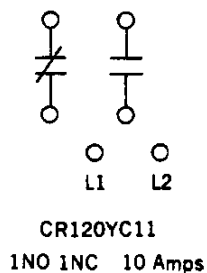


FIGURE 3