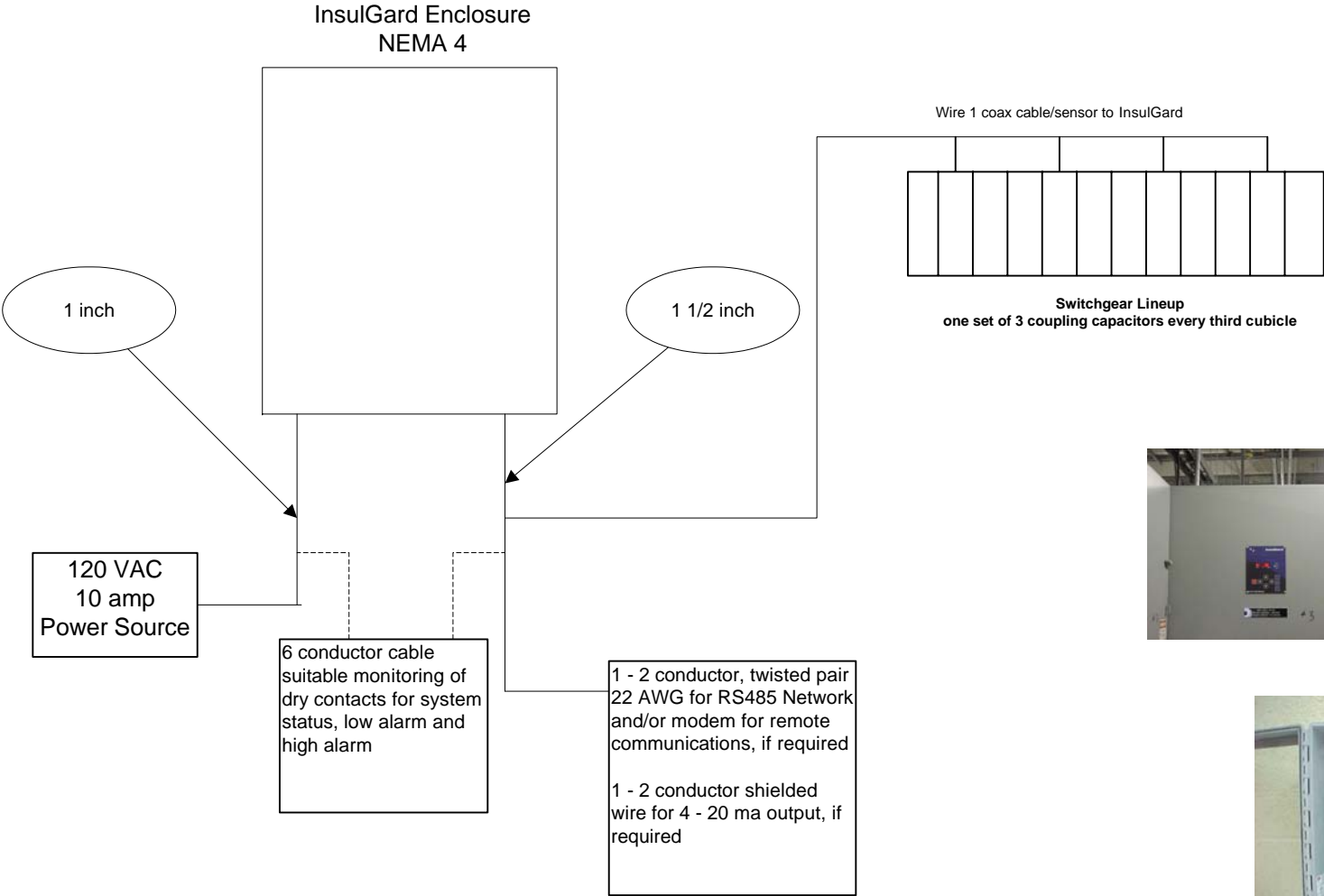


Switchgear Application



Panel Mount - Inside SWGR
(Preferred)



Door Mount

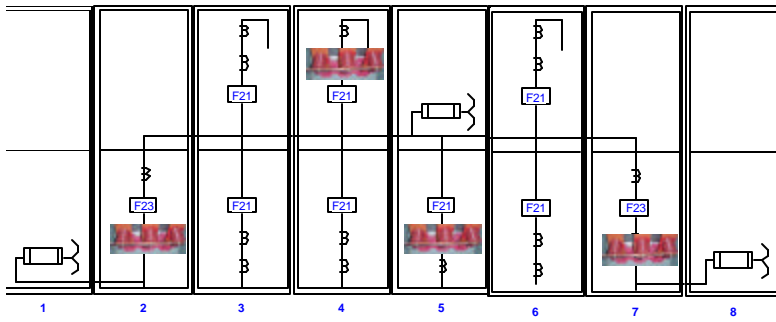


Wall Mount in Enclosure
(Preferred)

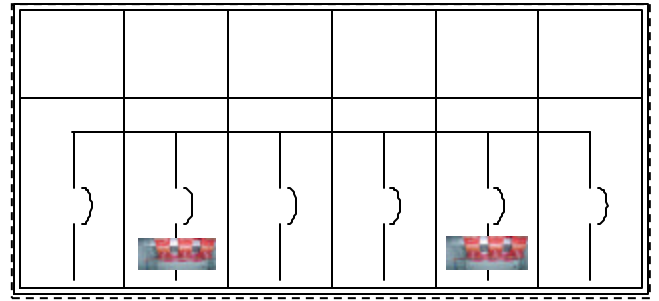


Coupling Capacitor
Installation

Sample Sensor Layouts

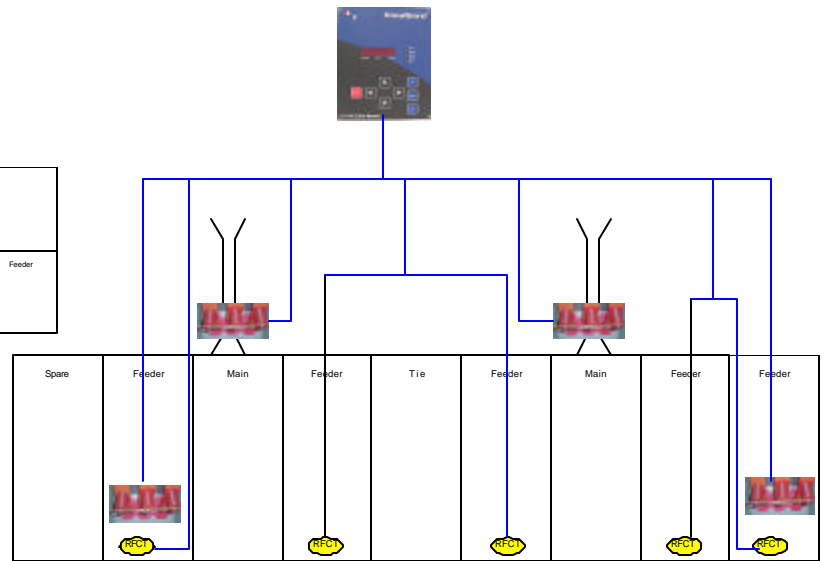
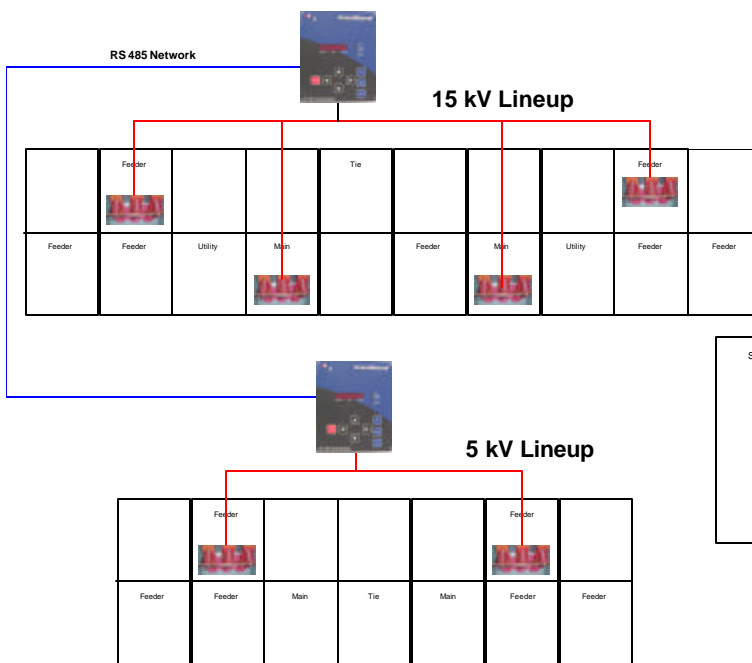


Two High Gear



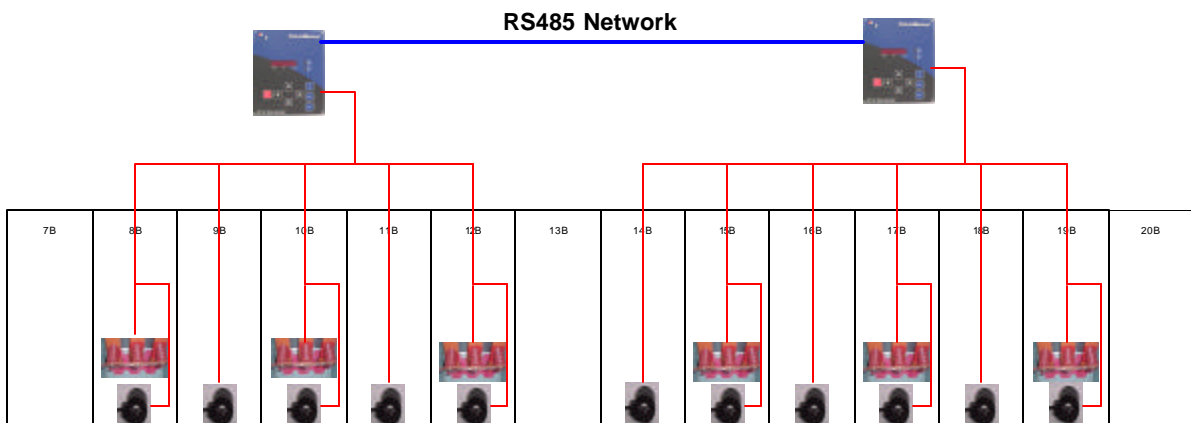
Single High Gear

Systems



Coupling Caps Only

Watching Incoming Bus Duct and Feeder cables with RFCTs on drain shield. Also watch secondary of incoming transformer.



Coupling Capacitors and RFCTs on Feeder drain shields