



TYPE ADM DISCONNECT SWITCH VERTICAL FUSE PULLER KIT

STYLE NO. 2067A02G23

INSTALLATION INSTRUCTIONS

BEFORE ANY WORK IS STARTED, MAKE CERTAIN THE INCOMING LINE BREAKER IS LOCKED OPEN AND THE CONNECTIONS TO THE UPPER STATIONARY CONTACTS HAVE BEEN DE-ENERGIZED. ALSO MAKE CERTAIN ALL AUXILIARY POWER CIRCUITS COMING INTO THE CUBICLE ARE DE-ENERGIZED.

- 1) Rotate handle to the "OFF" position and open door.
- 2) Install fuse puller instruction plate (N.P.6391D56H01) on inside of door in lower right hand corner with SIDE 1 (Vertical Fuses) facing out. Attach with four pieces of tape (one in each corner of instruction plate) after cleaning surface of door.
- 3) The fuse puller (Style 6391D55G01) is to be stored on the left hand outermost upright when not in use. It is held in place by two spring clips and angle brackets. Locate and attach these brackets as shown in FIG. 1. Use existing .226 dia. holes in upright.

This industrial type control is designed to be installed, operated, and maintained by adequately trained workmen. These instructions do not cover all details, variations, or combinations of the equipment, its storage, delivery, installation, check-out, safe operation, or maintenance. Care must be exercised to comply with local, state, and national regulations, as well as safety practices, for this class of equipment.

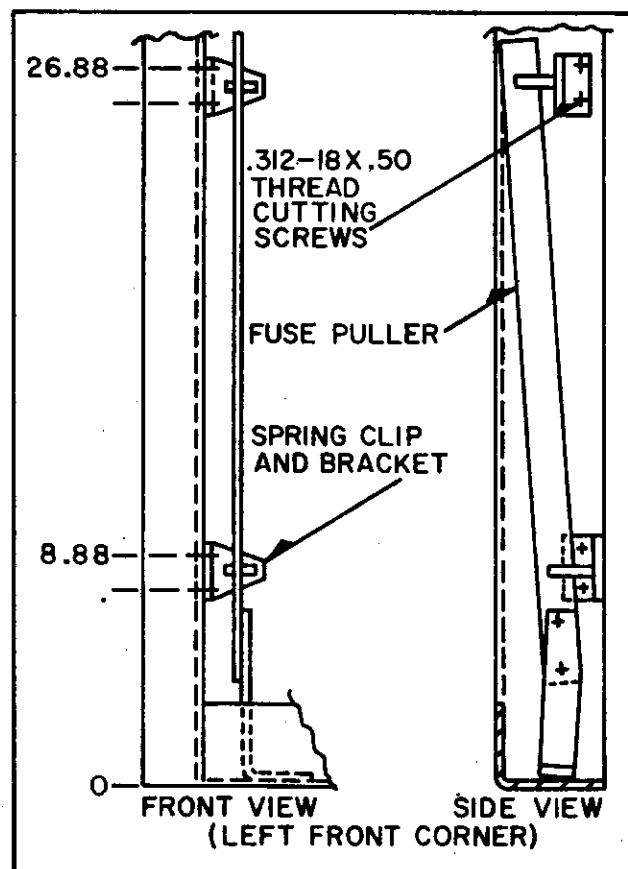


FIG.1

(DWG. 2101A13)

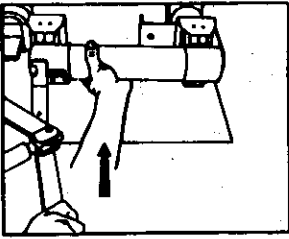
Ampgard®

Type ADM Switch Vertical Fuses

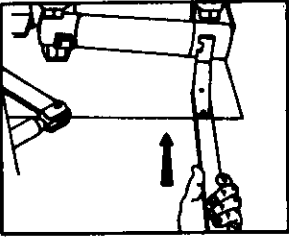
Fuse Puller Style 639ID55G01

BLOWN FUSE INDICATOR The main fuses in this switch have a blown fuse indicator. You can tell if the fuse is blown by looking at the red plug in the end at the fuse. If the plug is better the top surface of the fuse, the fuse is good. If the fuse is blown, the red plug will be extended and visible.

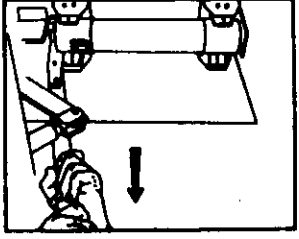
FUSE INSERTION - SINGLE BARREL



Set fuse on lower support with blown fuse indicator at top and tang on front. Place puller on top ferrule and push in sharply.

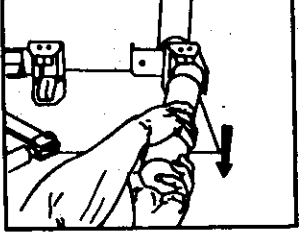


Place puller on outside of lower ferrule and push fuse into lower clip.



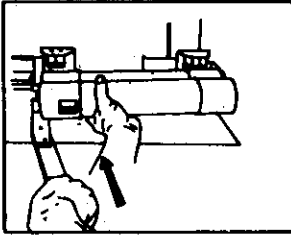
Head puller behind top ferrule and pull sharply.

FUSE REMOVAL - SINGLE BARREL

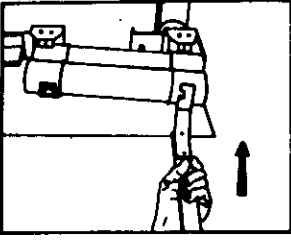


Place fuse forward approximately 90° and pull out of lower clip.

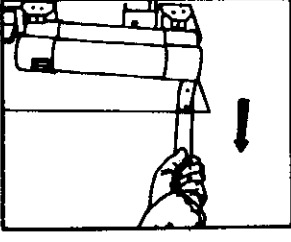
FUSE INSERTION - DOUBLE BARREL



Set fuse on lower support with blown fuse indicator at top and tang on front. Place puller BETWEEN top ferrules and push in sharply.

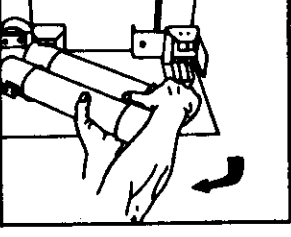


Place puller on lower ferrule and push fuse into lower clip.



Head puller BETWEEN lower ferrules and pull sharply.

FUSE REMOVAL - DOUBLE BARREL



Grasp fuse at bottom. Place fuse up and out of top clip.

PROTECTIVE INTERLOCKING

Only positive interlocking type mechanical interlocks are used in this switch. They provide protection by causing the mechanism to lock if incorrect operation is attempted. If this happens, or if some other symptom of incorrect adjustment is evident, DO NOT FORCE the mechanism. Refer to the switch instruction literature before making any adjustments.

**CAUTION - PHASE BARRIERS MUST BE IN PLACE BEFORE ENERGIZING.
ARC CHUTES MUST BE IN PLACE BEFORE OPERATING UNDER LOAD.**

WESTINGHOUSE ELECTRIC CORPORATION

SIZE 1, 480012200000 MAY 1975

GENERAL CONTROL DIV. BUFFALO, NEW YORK

N.P. 639ID56H01A
Side 1

Westinghouse Electric Corporation
General Control Division
Buffalo, New York 14240

Printed in U.S.A.
12-72