



TYPE ADM DISCONNECT SWITCH HORIZONTAL FUSE PULLER KIT

STYLE NO. 2067A02G24

INSTALLATION INSTRUCTIONS

BEFORE ANY WORK IS STARTED, MAKE CERTAIN THE INCOMING LINE BREAKER IS LOCKED OPEN AND THE CONNECTIONS TO THE UPPER STATIONARY CONTACTS HAVE BEEN DE-ENERGIZED. ALSO MAKE CERTAIN ALL AUXILIARY POWER CIRCUITS COMING INTO THE CUBICLE ARE DE-ENERGIZED.

- 1) Rotate handle to the "OFF" position and open door.
- 2) Install fuse puller instruction plate (N.P.6391D56H01) on inside of door in lower right hand corner with SIDE 2 (Horizontal Fuses) facing out. Attach with four pieces of tape (one in each

corner of instruction plate) after cleaning surface of door.

- 3) Remove the main fuses from their clips.
- 4) Loosen the .375-16 hex bolts that attach the rear fuse clip to the rear insulator. Back one of the bolts out approximately .25 inches and completely remove the other bolt. (see FIG. 1)
- 5) Install the rear fuse positioner bracket by slipping the slotted hole under the flat washer of the .375-16 bolt that was backed off .25 inches. Re-install the other bolt and tighten both securely. (see FIG. 1)
- 6) Install the notched metal plate to the front of the switch load connector with the notch pointing down. Use the same hardware. (see FIG. 1)
- 7) Replace the solid fuse stop bracket on the front fuse clip with the slotted version supplied in this kit. Again, back out one of the .375-16 hex bolts and completely remove the other one.
- 8) Remove the solid fuse stop and discard. Install the slotted one by slipping the slotted hole under the flat washer of the bolt that was backed out .25 inches. Re-install the other bolt and tighten both securely. (see FIG. 1)

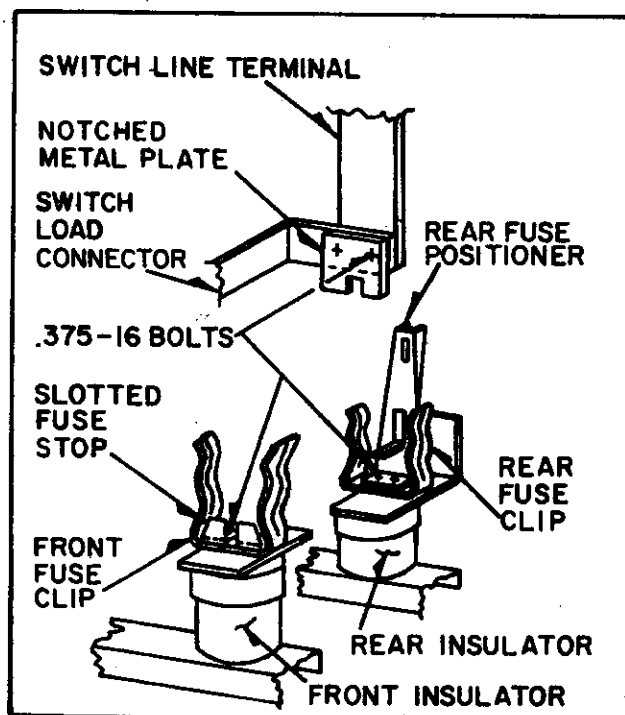


FIG. 1

(DWG.2101A11)

- 9) The fuse puller (Style 6391D55602) is to be stored on the left hand outermost upright when not in use. It is held in place by two spring clips and angle brackets. Locate and attach these brackets as shown in FIG. 2. Use existing .266 dia. holes in upright.

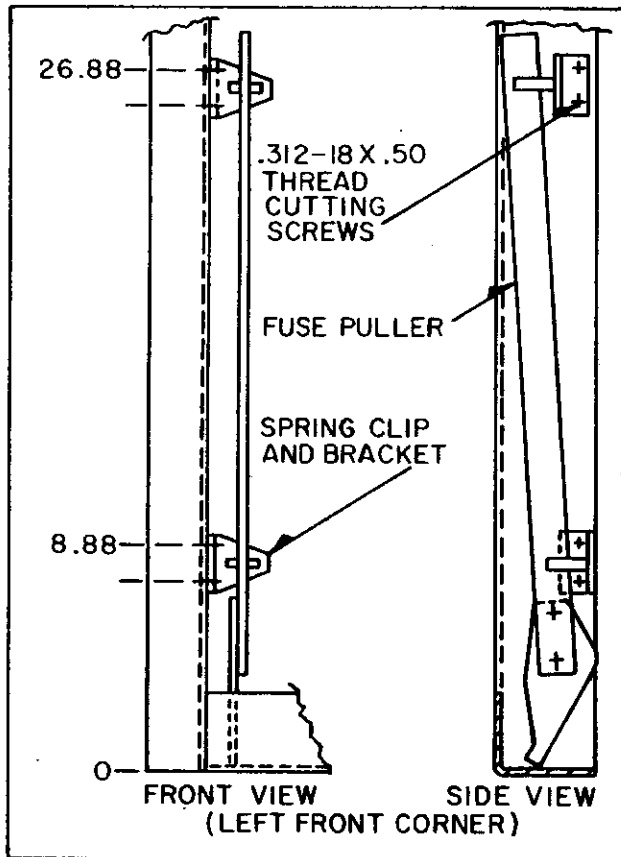


FIG. 2

(DWG. 2101A12)

This industrial type control is designed to be installed, operated, and maintained by adequately trained workmen. These instructions do not cover all details, variations, or combinations of the equipment, its storage, delivery, installation, check-out, safe operation, or maintenance. Care must be exercised to comply with local, state, and national regulations, as well as safety practices, for this class of equipment.

Ampgard

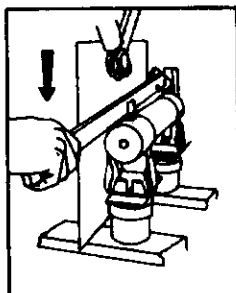
Type ADM Switch Horizontal Fuses

Fuse Puller Style 6391D55G02

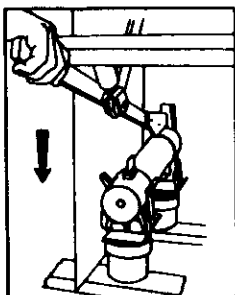
BLOWN FUSE INDICATOR

The main fuses in this switch have a blown fuse indicator. You can tell if the fuse is blown by looking at the RED plug in the end of the fuse. If the plug is below the top surface of the fuse, the fuse is good. If the fuse is blown, the red plug will be extended and visible.

FUSE INSERTION - SINGLE BARREL

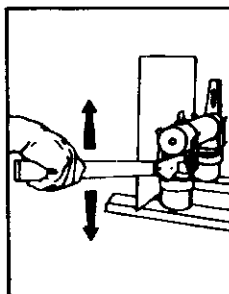


Position fuse on clips with blown fuse indicator at front and tang on top. Place tip of puller in slot at rear. Push down on puller handle until fuse snaps into front clip.

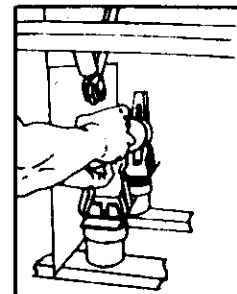


Remove puller from slot and ROTATE 180°. Again place tip in slot. Can fuse into rear clip using a jacking motion while pushing in on puller.

FUSE REMOVAL - SINGLE BARREL

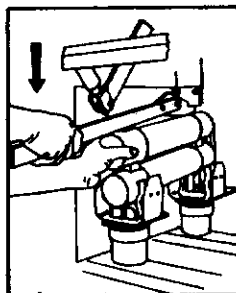


Place tip of puller in slot under front ferrule. Can fuse out of front clip using a jacking motion while pushing in on puller.

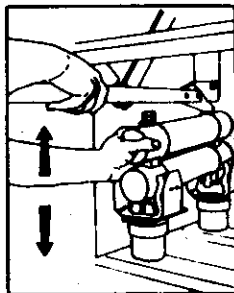


Lift up on front ferrule until fuse hits main blade. Lower fuse approximately horizontal and pull outward to free from rear clip.

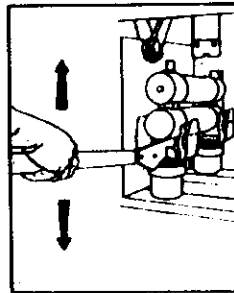
FUSE INSERTION - DOUBLE BARREL



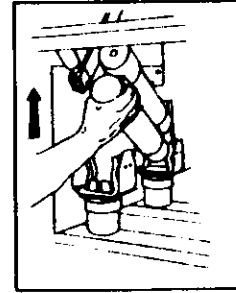
Position fuse on clips with blown fuse indicator at front and tang on top. Place tip of puller in slot above top rear ferrule. Push down on puller handle until fuse snaps into front clip.



Can fuse into rear clip using a jacking motion while pushing in on puller.



Place tip of puller in slot under front ferrule. Can fuse out of front clip using a jacking motion while pushing in on puller.



Lift up on front ferrule and push to either side to clear drive line. Fuse will come out of rear clip.

PROTECTIVE INTERLOCKING

Only positive interference type mechanical interlocks are used in this switch. They provide protection by causing the mechanism to lock if incorrect operation is attempted. If this happens, or if some other symptom of incorrect adjustment is evident, DO NOT FORCE the mechanism. Refer to the switch instruction leaflet before making any adjustments.

CAUTION - PHASE BARRIERS MUST BE IN PLACE BEFORE ENERGIZING.
ARC CHUTES MUST BE IN PLACE BEFORE OPERATING UNDER LOAD.

WESTINGHOUSE ELECTRIC CORPORATION

MADE IN U.S.A. - 1973

GENERAL CONTROL DIV. BUFFALO, NEW YORK

N.P.6391D56H01A
Side 2

Westinghouse Electric Corporation
General Control Division
Buffalo, New York 14240

Printed in U.S.A.
12-72