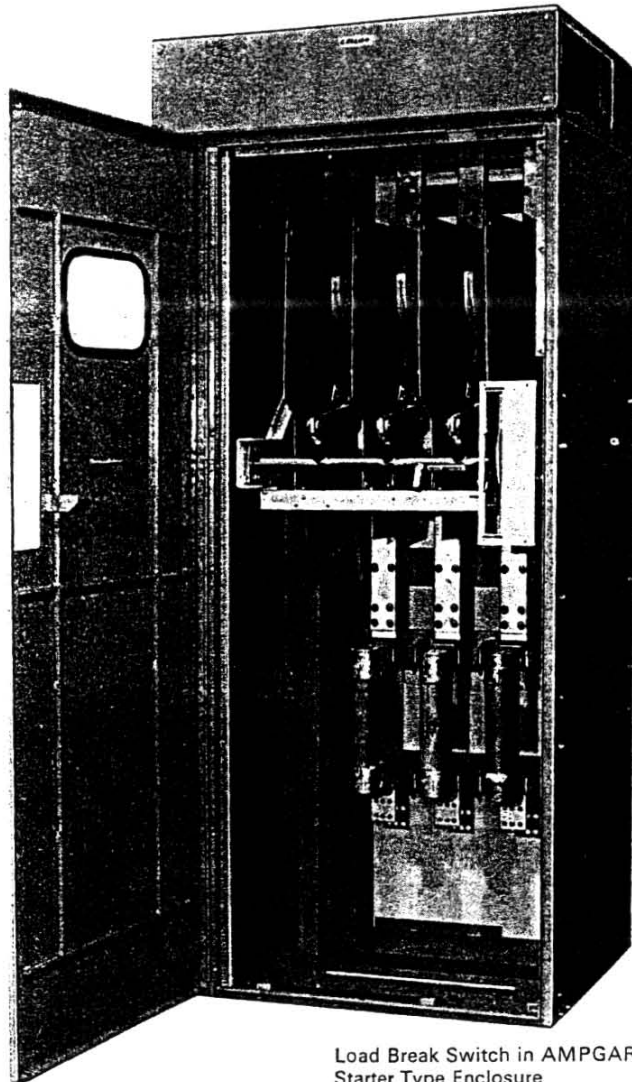




**Westinghouse**

**Ampgard**



Load Break Switch in AMPGARD  
Starter Type Enclosure

**Description of a Load Break Switch Cell**

1 — Only fused break switch cell, consisting of the following equipment details:

1 — CEMA type I general purpose sheet steel enclosure, Ampgard type, floor mounting, self supporting, completely front accessible, suitable for mounting against the wall or back-to-back mounting of similar structures, approximately 100" high, 42" wide and 36" deep, with hinged front door and bolted on rear covers.

**Mounted on the Front Door:**

1 — Cardholder.

1 — Viewing window to enable the operator to see the position of switch blades.

**Mounted Within the Enclosure:**

— Space only for accommodation of power bus with provision for extension in order to have a common bus for a group of adjacent cells supplied by the same feeder.

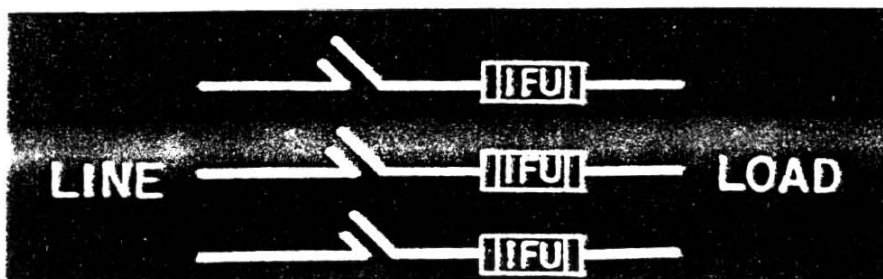
1 — Three pole, single throw, gang operated load break switch, 600 amperes (or 1200 amperes, as applicable), 5 Kv, type AWP, with removable external operating handle.

1 — Set of safety interlocks to prevent closing of the switch when the door is open and opening of the door when the switch is closed.

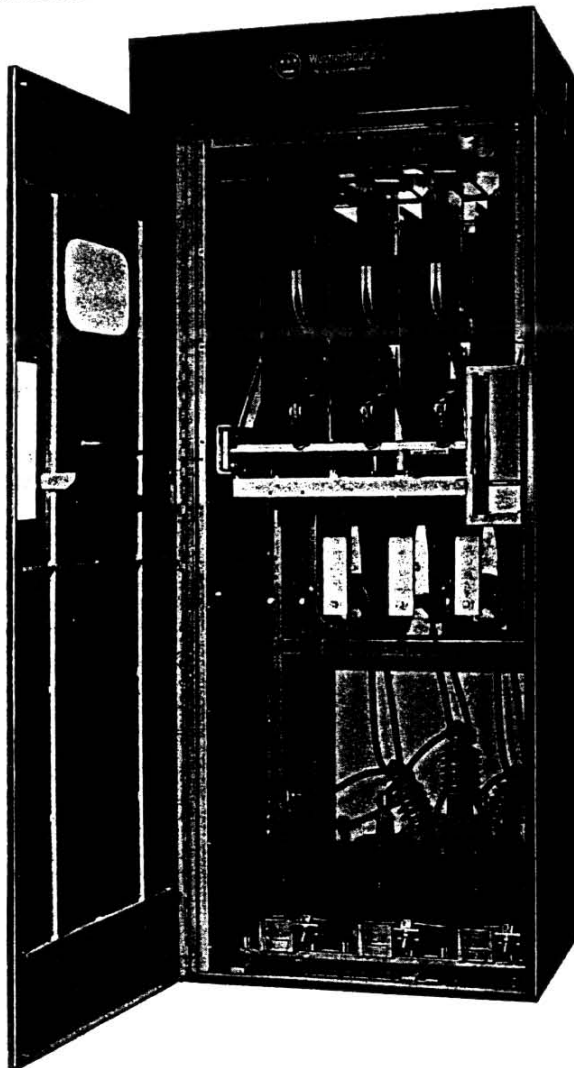
— Provision for accommodation of key interlock.

1 — Set of three current limiting power fuses, with an interrupting capacity of 350,000 Kva at 4160 volts, (200,000 Kva at 2300 volts), 3 phase, 60 Hz.

1 — Set of interconnections and assembly details.



### Optional Additions



Above photograph shows an unfused switch cell with current transformers, surge capacitor and lightning arresters. Note the use of solid interconnecting links in the main power circuit and the barrier segregating the incoming cable compartment.

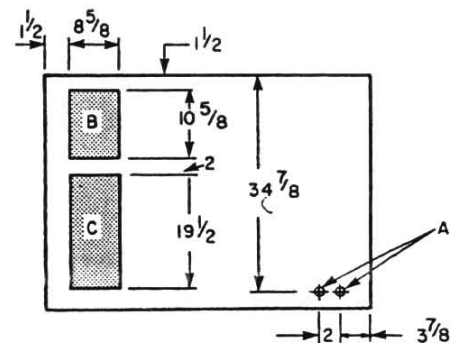
Other optional additions are available.

### Ratings and Performance

Kv Ratings Nominal Voltage	Impulse Withstand Kv BIL	Current Ratings — Amperes				Fault <sup>②</sup> Closing
		Continuous	Interrupt	Momentary <sup>①</sup>		
4.8	60	600	600	61,000		40,000
4.8	60	1200	1200 <sup>③</sup>	61,000		61,000

### Dimensions

#### Top View



#### Space Available for Customers

- A — Control Leads
- B — Outgoing Leads
- C — Incoming Line
- D — 3/4 Da. Bolt Holes

#### Base Plan

