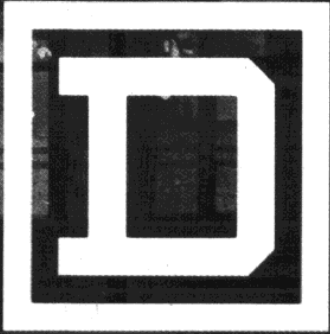


Class 6052

POWER ZONE center

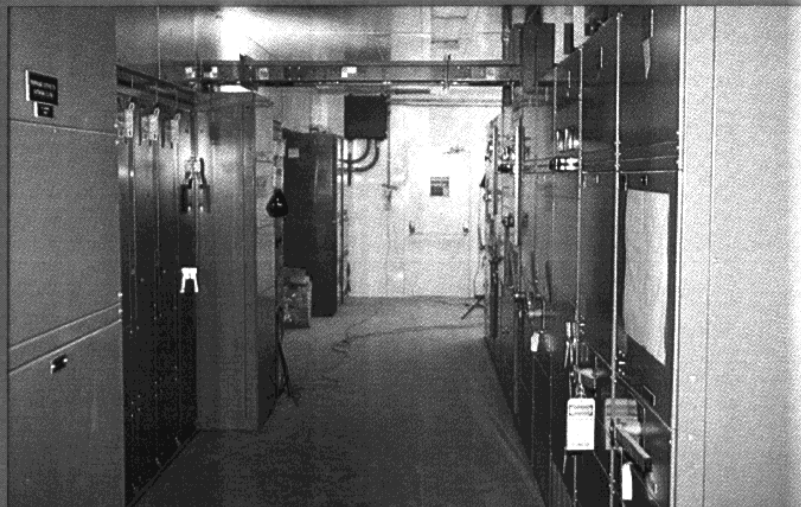
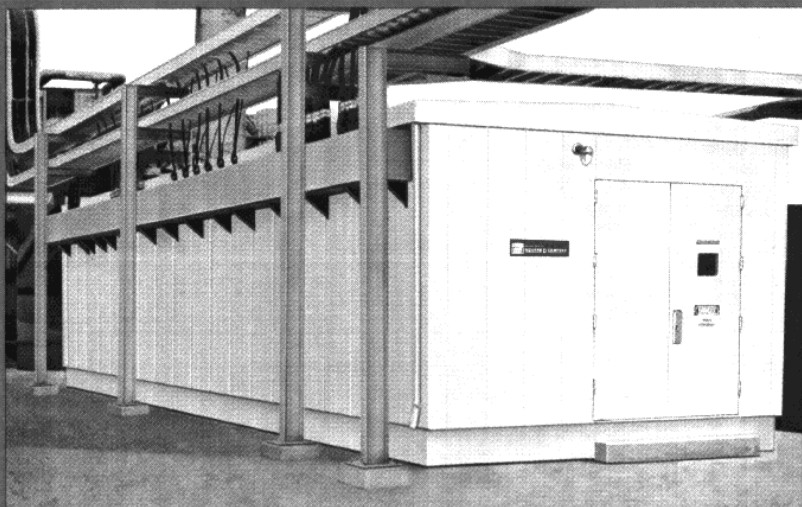
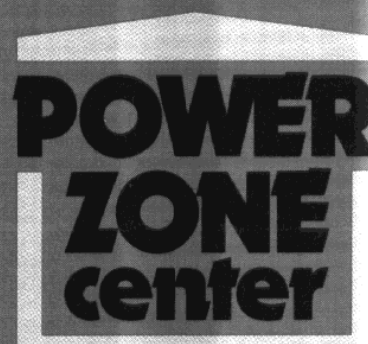
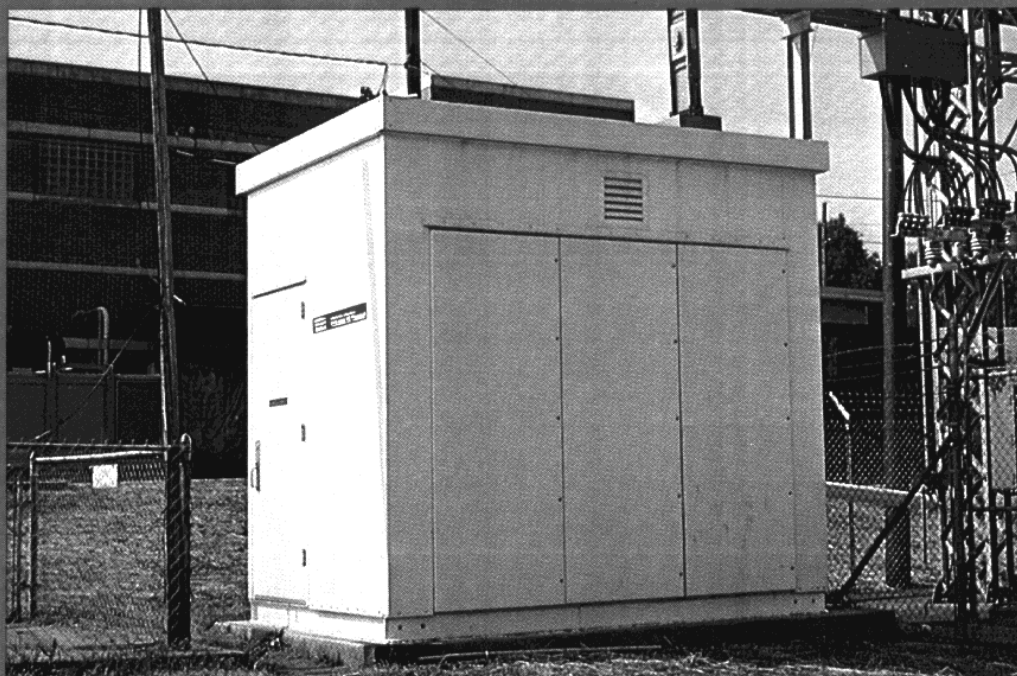
Packaged
Protection
from
Square D



SQUARE D COMPANY

POWER-ZONE Center is a trademark of Square D Company.

POWER-ZONE™ Centers Packaged Protection from Square D



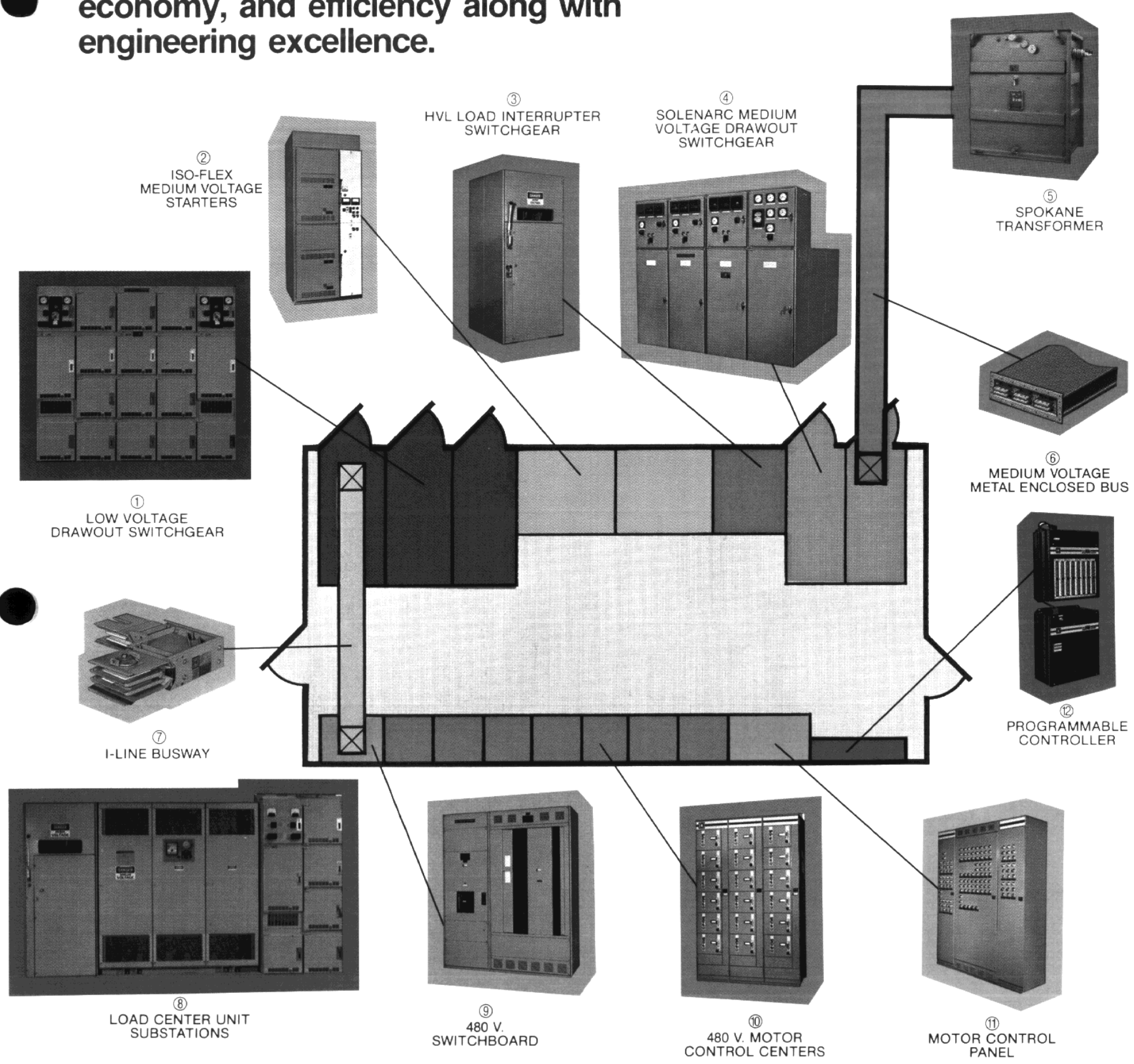
Square D's POWER-ZONE Center is more than just a prefabricated enclosure . . . It's a **completely self-contained** power protection system in a **pre-engineered package**. The POWER-ZONE Center's rugged construction and design flexibility mean the entire system can be custom tailored to your SPECIFIC power requirements and environmental considerations.

Square D's POWER-ZONE Center is a **space saver**. It requires considerably less square footage to house equipment than conventional enclosures. And the modular construction means expansion is easier — your initial investment can be minimized without concern about the cost of adding additional space later.

Another advantage of the POWER-ZONE Center is the ease with which it can be specified and installed. Working from your general requirements, Square D provides **single-source responsibility** for the job . . . overall design coordination, complete factory assembly and equipment pre-installation. All equipment is pre-wired and pre-tested to assure trouble-free performance from the start. No need for you to coordinate the selection of equipment, construction schedule and field interfacing. With Square D's POWER-ZONE Center, it's all part of the package.

We took all the features customers asked for and combined them in one efficient and economical package . . . the POWER-ZONE Center.

When you specify a Square D
POWER-ZONE Center, you specify quality,
 economy, and efficiency along with
 engineering excellence.



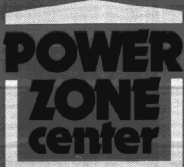
Our Equipment is Matched to Your Specific Requirements.

Square D electrical equipment is an integral part of the POWER-ZONE Center and is carefully matched to the power requirements of your application for an integrated systems approach.

The unique modular design of the POWER-ZONE Center makes it easily adaptable to any equipment layout required and allows for maximum flexibility in building configuration.

- ① Class 6130 LVDO Switchgear.
- ② Class 8198 ISO-FLEX® Medium Voltage Starters.
- ③ Class 6140 HVL Interrupter Switchgear.
- ④ Class 6150 SOLENARC® DSE Metal-Clad Switchgear.
- ⑤ Class 7200 SPOKANE Transformers.
- ⑥ Class 6090 POWER-ZONE Busway.
- ⑦ Class 5610 I-LINE® Busway.
- ⑧ Class 6020 POWER-ZONE Load Center Unit Substation.
- ⑨ Class 2700 480V POWER-STYLE® Switchboard.
- ⑩ Class 8998 480V Model 4 Motor Control Center.
- ⑪ Auxiliary Motor Control Panel.
- ⑫ Class 8881 Programmable Controller.

POWER-ZONE is a trademark of Square D Company



POWER-ZONE™ Centers Packaged Protection from Square D

POWER-ZONE Centers are available in the following NEMA classifications:

- NEMA 3R — Rainproof and sleet (ice) resistant.
- NEMA 4X — Watertight and corrosion resistant.
- NEMA 7 — Class I, Group(s) A, B, C, and/or D. For location in atmospheres consisting of hazardous gases or vapors.
- NEMA 9 — Class II, Group(s) E, F, and/or G. Where enclosures must prevent the ingress of explosive amounts of dust.
- NEMA 12 — Dusttight and driptight — intended for use indoors to protect equipment against fibers, flyings, lint, dust, light splashing, dripping, and external condensation of non-corrosive liquids.

ENCLOSURE DESIGN SPECIFICATIONS

- BASE** — The base is constructed of welded steel "I" beams, channels and angle supports, sized and reinforced to accommodate loading requirements. The base may also include skid-beams if the application requires a portable unit. When welding is complete, the base is cleaned, primed with zinc-chromate and a bituminous undercoating is applied. The base exterior is then finished with an epoxy coating.
- FLOORING** — The floor is constructed of 3/16" or 1/4" steel plate (as determined by loading requirements) and is welded to the base framework. Standard floor is a smooth steel, finished with an application of ASA 61 skid-resistant epoxy (or enamel). Tread plate steel may also be used, as an option.
- WALL PANELS** — Wall panels are formed of 18-gauge galvanized steel in an interlocking design which is self-framing and capable of withstanding wind loads in excess of 125 MPH. Optional panel thickness can vary from 18 to 12-gauge.

REMOVABLE END WALLS FOR FUTURE EXPANSION

PANIC HARDWARE AND CLOSER STANDARD ON ENTRANCE DOORS

WELDED STEEL "I" BEAMS, CHANNELS AND ANGLE SUPPORTS

BLACK MASTIC UNDERCOATING

ROOF FEATURES INTERLOCKING STANDING RIB DESIGN

REMOVABLE LIFTING LUGS

3/16" OR 1/4" STEEL FLOOR FINISHED WITH NON-SKID VINYL EPOXY (OR ENAMEL)

INTERLOCKING GALVANIZED STEEL WALL PANELS ARE SELF-FRAMING

INSULATION IN WALLS AND CEILING AS REQUIRED BY ENVIRONMENTAL CONDITIONS

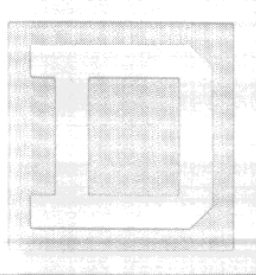


The POWER-ZONE Center enclosure protects your equipment from hostile environments and adverse weather conditions for reliable, continuous operation.

- LIGHTING** — Sufficient fluorescent lighting fixtures are provided to maintain a minimum of 30 foot candles of illumination at the floor. High pressure sodium or incandescent exterior lighting with switch or photocell control can be provided upon request.
- DOORS** — Entrance doors are of double-wall construction with cellular neoprene gaskets, complete with brushed aluminum panic hardware and door closer. Upon request, stainless steel hardware, viewing window (wire mesh tempered safety glass) and hold-open device will be provided. Normally, a door is provided at each end of the POWER-ZONE Center; one is sized to facilitate removal of the largest piece of gear and the other is a 3' wide by 7' high personnel door. When requested, a removable wall panel is provided permitting removal of large transformers, etc. Equipment doors are supplied when rear access is required.
- LIFTING** — The POWER-ZONE Center is equipped with lifting lugs which are removable.

- HEATING AND COOLING** — The POWER-ZONE Center can be ordered with a variety of heating and/or cooling units in either single or combination (heat pump) construction. When conditions dictate, units for hazardous locations will be provided. Alarm panel, intake stack with bird screen, rain cap and purging system are available upon request. Motor-driven pressurization units capable of maintaining up to 1/2" of water static pressure can be furnished.
- OPTIONS** — The POWER-ZONE Center enclosure is also available with stainless steel, aluminum and fiberglass panels. Other design and material options are available upon request.

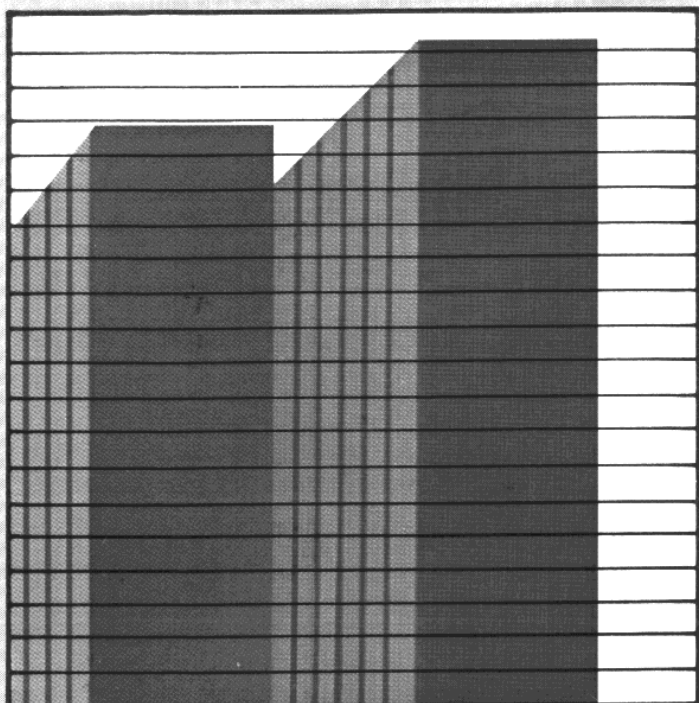
THESE GENERAL SPECIFICATIONS ARE FOR BASIC APPLICATIONS. IF YOU HAVE SPECIAL REQUIREMENTS, CONTACT US REGARDING THE AVAILABILITY OF SPECIFIC DESIGN OPTIONS.



SQUARE D COMPANY

Compare the Advantages of the Square D POWER-ZONE™

Initial Timetable

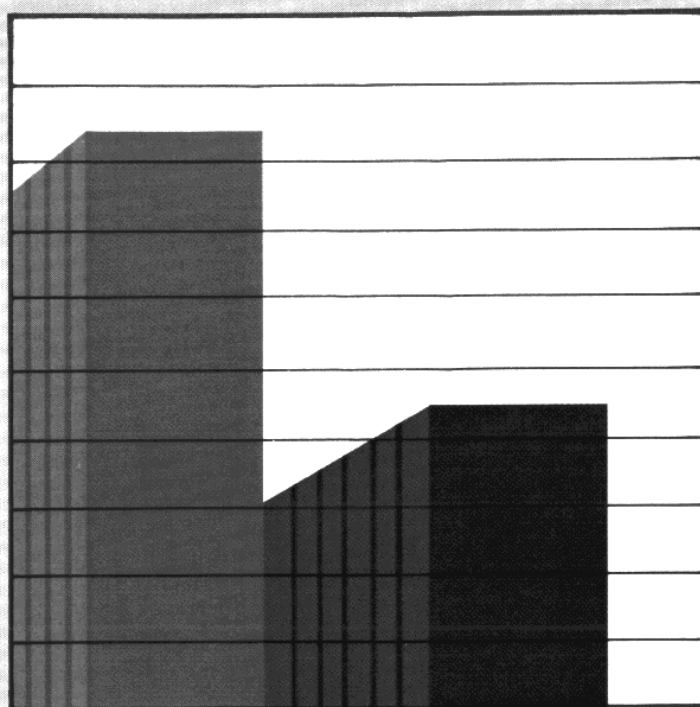


POWER-ZONE
CENTER

CONVENTIONAL
CONSTRUCTION

PROJECT TIMETABLE — The POWER-ZONE Center goes into service more quickly because of Square D's single-source responsibility for the total unit package.

Tax Write-off

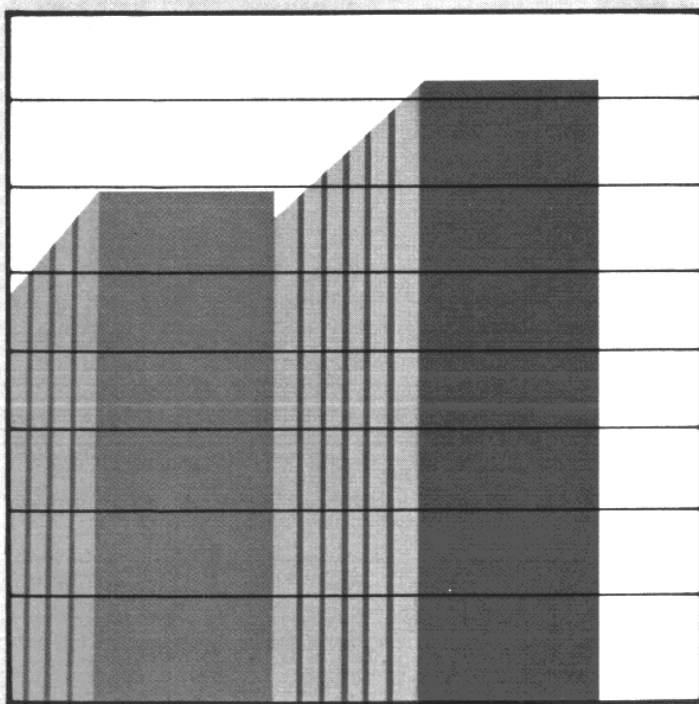


POWER-ZONE
CENTER

CONVENTIONAL
CONSTRUCTION

TAX WRITE-OFF — POWER-ZONE Centers offer a tax advantage. They are assessed as "equipment" (lower rate) and may be depreciated faster.

Overall Cost

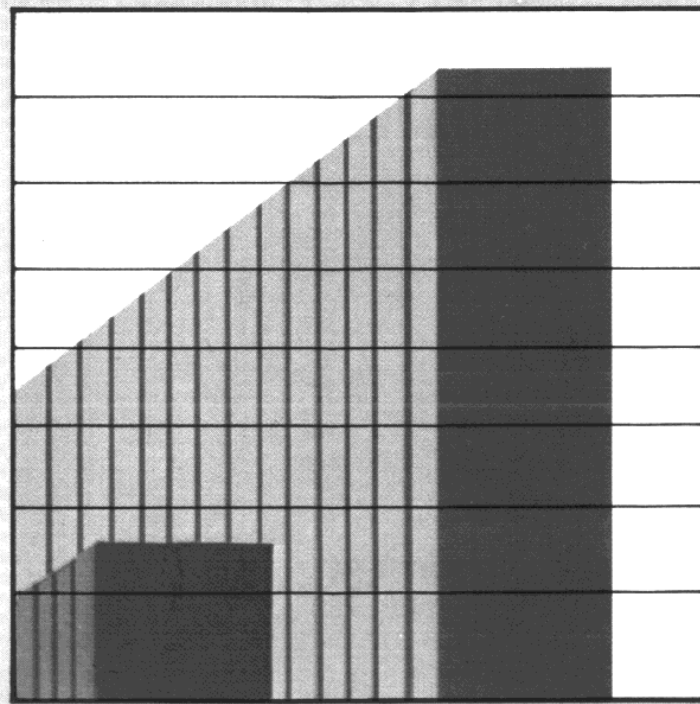


POWER-ZONE
CENTER

CONVENTIONAL
CONSTRUCTION

OVERALL COST — The POWER-ZONE Center comes as a single-package shipment for substantial savings in receiving, handling and storage costs.

Installation Responsibility



POWER-ZONE
CENTER

CONVENTIONAL
CONSTRUCTION

EASE OF INSTALLATION — All equipment wiring and installation is complete when the POWER-ZONE Center is shipped, ready for on-site line and load connections.

Center Over Typical Electrical Equipment Housing

POWER-ZONE CENTER

BLOCK BUILDING WITH SAME EQUIPMENT

DESIGN AND ENGINEERING

Square D Company designs and engineers the complete package.

POWER-ZONE Center's unique design allows easy expansion.

POWER-ZONE Center's switchgear is accessible through rear hinged access doors.

Square D's single-source responsibility results in a total unit package.

The POWER-ZONE Center is factory wired and a complete set of wiring diagrams is provided along with a composite layout.

POWER-ZONE Center's assembly and equipment pre-installation are completely tested in the factory.

Customer drafts and designs, purchases, engineers and facilitates the structure.

Often the building is shared by mechanical equipment, instrumentation, and operating people. This inflexible arrangement of space and type of construction make expansion difficult.

Rear accessibility to electrical equipment requires 25-35% additional space within a block building.

Purchaser soliciting and analyzing of several proposals results in varying specifications and split responsibilities.

Customer is responsible for preparing the interconnection diagrams, making the physical interconnection and providing a composite layout for the equipment.

Purchaser must assemble and check all interface connections between the various types of equipment on site.

RECEIVING, HANDLING AND STORAGE

Square D's POWER-ZONE Center is received as a single shipment that can be unloaded in approximately one hour. No intermediate handling and storage are required.

Customer receives several shipments at different times from different sources. This requires provisions for:

- Double Handling for Storage
- Special Protection During Storage
- Minimum Periods for Labor
- Several Hour-Minimum Equipment Rentals
- Trucking from Warehouse to Location

Problems that can result:
Pilfering or Lost Equipment
Foul Weather Time Loss
Damage During Storage

SCHEDULING AND LABOR

Square D's single-source responsibility for designing, engineering and coordinating provides for early placement of the complete order.

Square D's experience and flexibility enable the company to facilitate equipment changes throughout the development of the project.

Square D normally ships the total package within two weeks of similar indoor equipment. Engineering and planning is complete when the equipment is received. This eliminates any problems with on-site match-up.

When a POWER-ZONE Center requires a busway system hook-up, it is checked for ease of assembly prior to shipping.

The POWER-ZONE Center includes a self-supporting base. All equipment is pre-leveled as it is installed in the enclosure.

All Square D POWER-ZONE Center equipment is interwired and tested before it leaves the factory.

Typical building procurement is slow and costly. Whatever the size of the job, the consumer must issue a series of purchase orders, evaluate, review and coordinate the entire project. Specification amending and re-bidding may result. The costs for individual equipment are not as economical as packaged prices.

When the purchaser must coordinate changes in the job, numerous inside people and several vendors may be involved. Communication among many sources is slow, and errors and oversights can be costly.

Shipping times vary for each different product type. Low voltage equipment which is shipped the quickest is the most subject to project changes. This places the responsibility for match-up in the field. Warranties may also be affected.

When a purchaser must coordinate and order a busway system, the compatibility of its fittings and usage cannot be checked until installation in the field.

Purchaser must provide the channel base, grouting and labor for leveling all equipment in the field.

Field labor must be provided to install and interconnect all equipment in typical construction. On-site assembly must coordinate the following:

- | | |
|-----------------------------------|-----------------------|
| Lighting Transformers | Electric Space Heater |
| Lighting Panels | Thermostat |
| Lighting Fixtures and Receptacles | Exhaust Fan |
| Exterior Lighting | Louvers |
| Photo Electric Switch | Battery and Charger |
| Air Conditioner | Tool Rental |
| Pressurizing Fans | Power Panels |
| Pressure Gauge or Sail Switch | Labor Overhead |

FINANCIAL

Billing on a single invoice covering the complete POWER-ZONE Center and all the electrical components occurs within 30 days after shipment of the total unit.

POWER-ZONE Centers are taxed the same as "equipment."

Charges on many invoices begin after the shipment of the individual components and building materials. Payment may be due before construction is complete, and the total unit is in service.

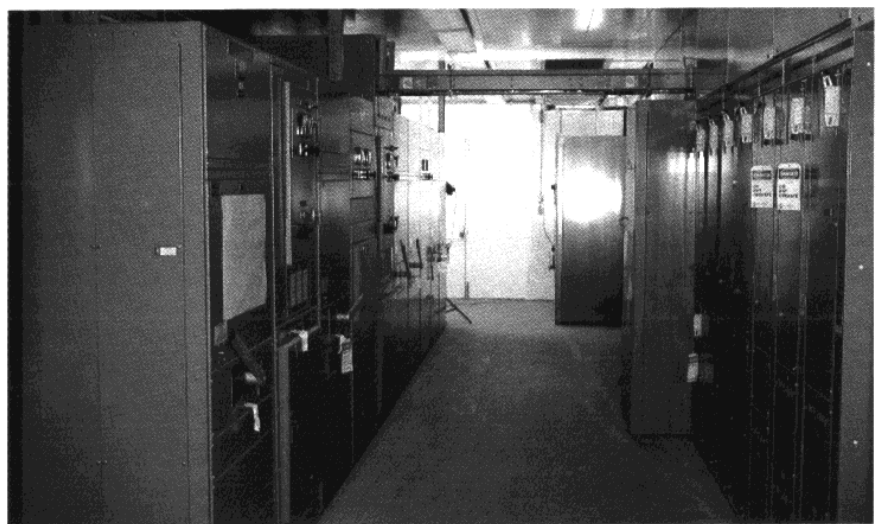
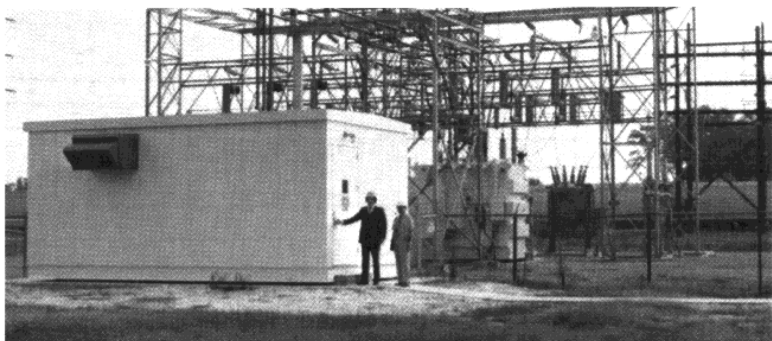
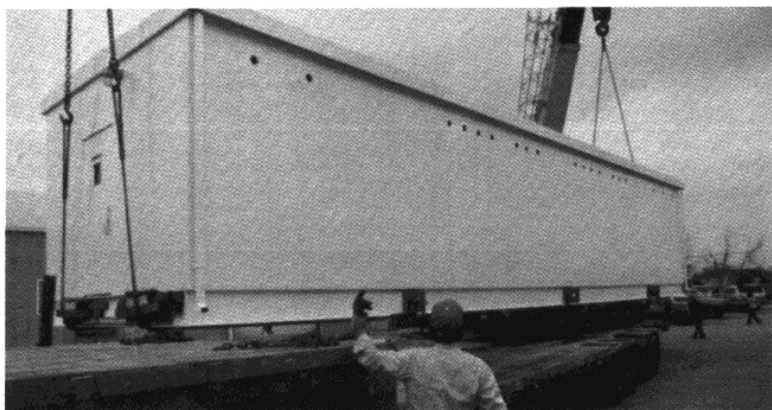
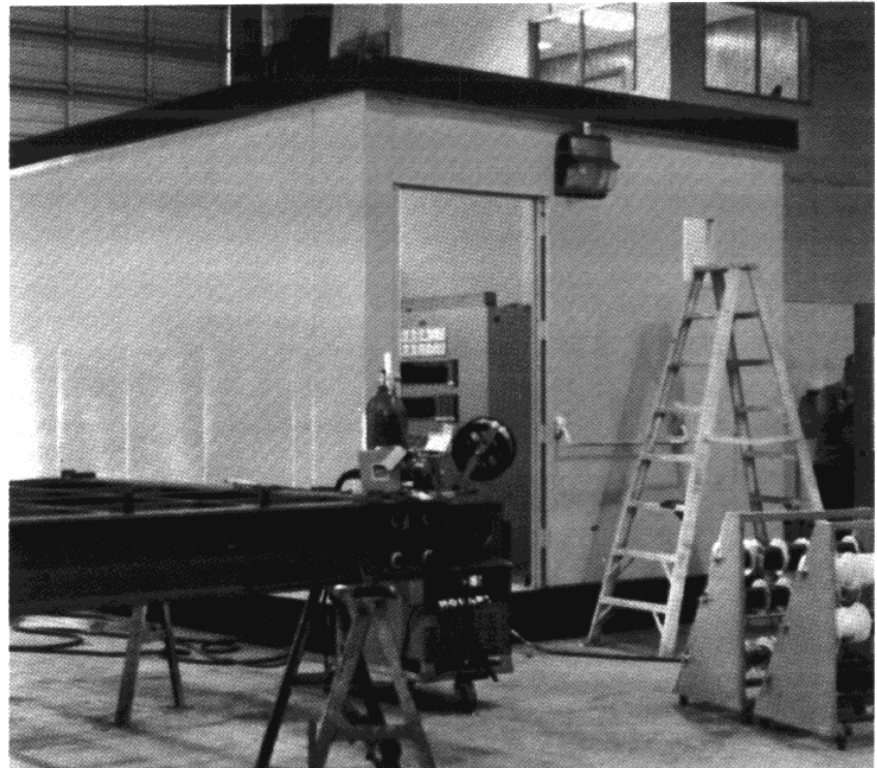
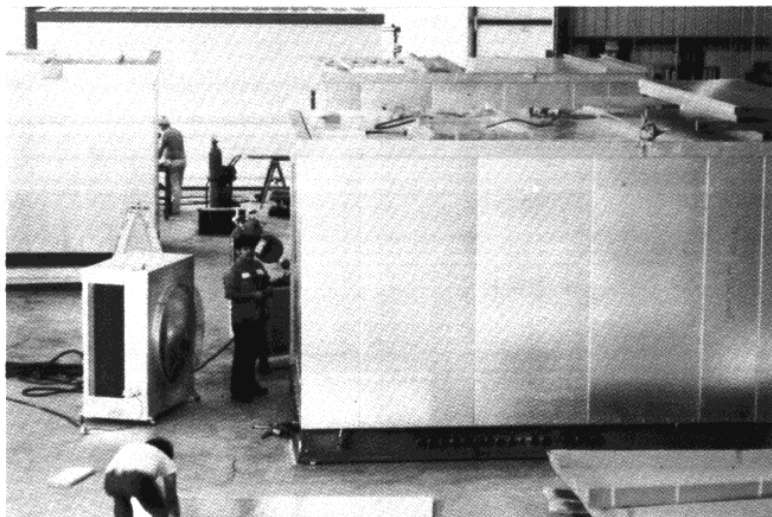
The block building is considered a real estate improvement and is affected by a higher tax schedule, building permits, inspections, bonding and insurance.

DEPRECIATION

May be depreciated in 8 to 10 years.

May be depreciated over a 40 year period.

Square D's POWER-ZONE™ Center Gives You Single-Source Responsibility From Start . . . To Finish



For further information on POWER-ZONE Centers,
contact your local Square D Field Office, or write to
Square D Company, Department SA, P. O. Box 558,
Middletown, OH 45042.

SQUARE D COMPANY

