



DESCRIPTION • INSTALLATION • MAINTENANCE

INSTRUCTIONS

*Life-Linestarter**

Class 11-200 NS5, NV5, NT5, NW5, NY5, and N.5
Size 5, 3 Poles, A-C

SIZE NO.	MAXIMUM HORSEPOWER RATINGS		
	Volts—Polyphase		
	110	208-220	440-600
5	50	100	200

DESCRIPTION AND INSTALLATION

Short Circuit Protection. Protect the Life-Linestarter against short circuits by one of these methods:

1. Fuses rated at not more than 4 times rated motor current.
2. Time limit circuit breaker set at not more than four times rated motor current.

Overload Protection. Before putting the starter in service check the over-load heater marking against the Heater Table. Mount the overload heaters with their loop-shaped portions extending into the circular recesses of the relays. Be sure that the contacting surfaces are clean and all connections are tight.

Set the slider controlling reset operation at one of the allowing positions, as desired:

1. "AUTO" for automatic reset: the push rod serves as a stop button.
2. "HAND" for manual reset: the push rod serves as both a reset button and a stop button.
3. "HAND-NO STOP" for manual reset: the push rod serves as a reset button only. DO NOT use this setting if the push rod is actuated by a built-in or other local stop button.

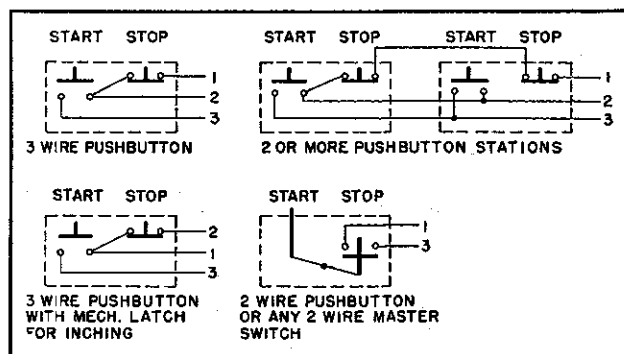


FIG. 1. Connections to Master Switches

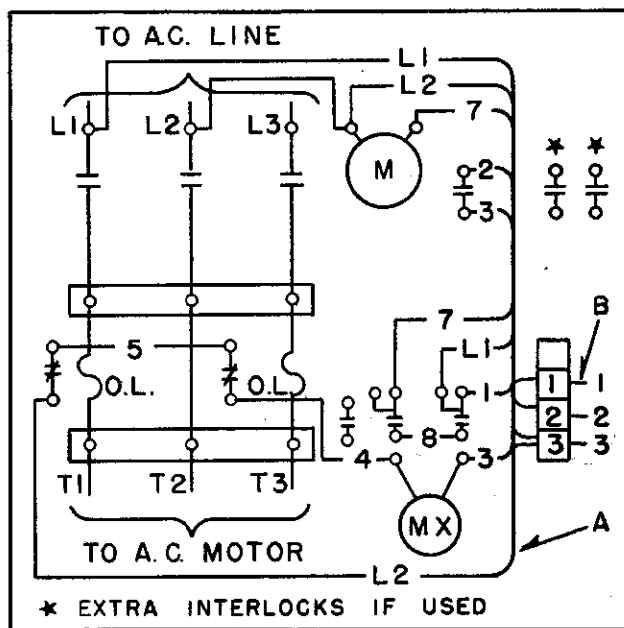


FIG. 2. Wiring Diagram, Front View

CONNECTION TABLE						
L1	L2	L3	← STARTER TERMINALS →	T1	T2	T3
Connect Starter Terminals Above to Line as Below				Connect Starter Terminals Above to Motor Terminals Below		
Phase 1	Common	Phase 2	2 Phase 3 Wire	T1	T3 & T4	T2
Phase 1	Phase 1	Phase 2 ∅	2 Phase 4 Wire	T1	T3	T2 ∅
Phase 1	Phase 2	Phase 3	3 Phase	T1	T2	T3
∅ Connect T4 of motor solid to phase 2.						

\emptyset Connect T4 of motor solid to phase 2.

Connections. The starter is shipped connected as in Fig. 2 with the operating coil circuit supplied from the line. Make connections in accordance with the Connection Table.

To operate the coil from a separate control circuit, remove lead A and omit connection B. Connect one line of the separate supply to the overload relay terminal (made vacant by removal of lead A) and the other line to terminal 1 of the push button.

When making connections, insert the bared cable or wire into the connector so that it is squeezed against the back of the tang when the screw is tightened.

Electrical Interlock. Additional Type L-60 electrical interlocks, to an overall allowable limit of three interlocks, may be obtained for mounting on the starter. Order by style number as follows:

S# 1754 846—For 2nd Electrical Interlock

S# 1754 847—For 3rd Electrical Interlock

Both interlocks provide either normally-open or normally-closed operation. Mounting hardware and instructions are included.

MAINTENANCE

1. Keep the De-ion arc box in place at all times that the starter is in operation. Remove when necessary for inspection of contacts by removing the two holding screws. Replace with care, seating the back of arc box squarely against the face of arc box hanger before fastening it in place.

2. Do not lubricate the bearings, contacts or any other parts.

3. Do not dress the contacts unless unusually severe pitting occurs. The surfaces are silver plated and discoloration is not harmful. Replace the contacts when the overtravel becomes reduced to about $\frac{1}{16}$ inch.

4. Do not file or dress connectors or other current-carrying parts lest the protective plating be removed. Surface discoloration is not harmful.

5. To remove the operating coil first disconnect the coil leads, second remove the arc boxes, third remove the $\frac{3}{8}$ bolt which holds the stop bracket and drop moving assembly out of way, fourth remove the two slotted hex head shoulder bolts with clamp and then pull off coil. Mount new coil with terminals up. Re-assemble parts in reverse order of removal making sure that all screws and bolts are tight.

PRINCIPAL RENEWAL PARTS

NAME OF PART	STYLE NUMBER
Coil (S# marked on coil).....	
Arc Box.....	1502 632
Moving Contact.....	1502 608
Stationary Contact.....	1502 609
Contact Spring.....	1502 627



WESTINGHOUSE ELECTRIC CORPORATION

BUFFALO PLANT • MOTOR AND CONTROL DIVISION • BUFFALO 5, N. Y.

Printed in U.S.A.