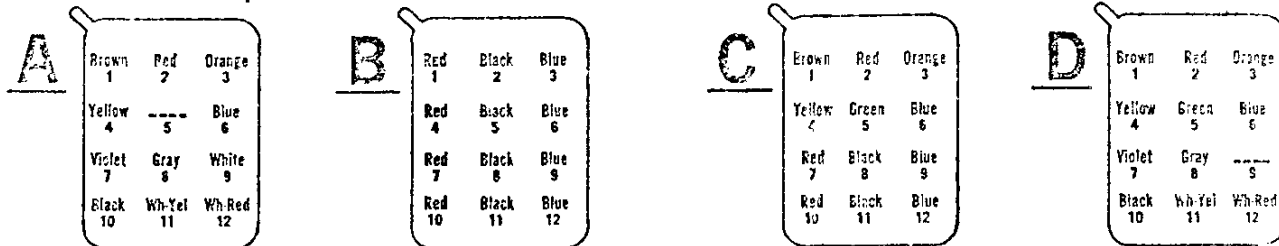


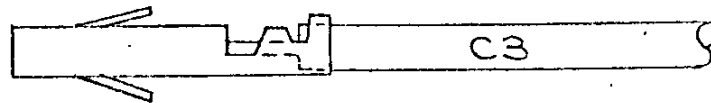


ILL 15377
File

INSTRUCTIONS FOR INSTALLING SECONDARY CONTACT LEADS ON SYSTEMS POW-R BREAKER STATIONARY DRAWOUT FRAMES



Connector Housings as Viewed From the Back

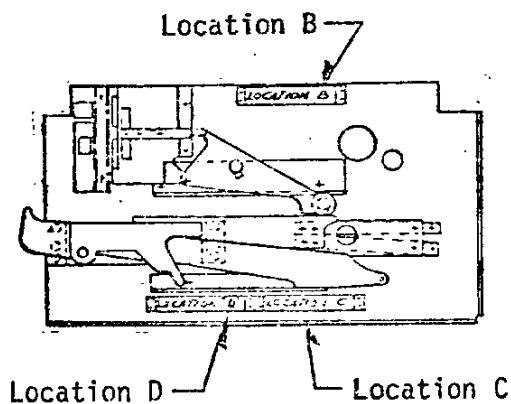


Wires are color coded and numbered. Make sure to match the letter and number to the corresponding letter and number on the connector housing. The female sockets have ears which snap into place when inserted to the proper depth. Insertion is from the back as pictured above. They can be removed by the use of a special tool.

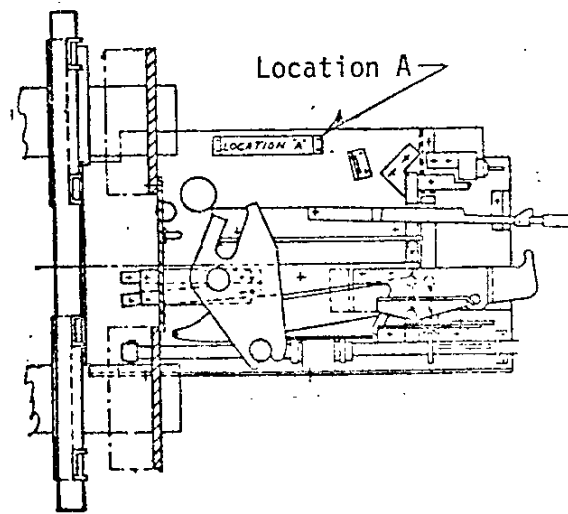
Please note the freedom of movement of the mounting plate on which the connector housings are located. This movement is to help line up the moving and stationary secondary contacts. When tying down the leads from the connector housings, retain this freedom of movement of the mounting plate.

Terminal Boards on the Drawout Assembly

The location of the Terminal Board Assemblies that mount inside the stationary drawout frame is shown below. Securely tie the wires allowing freedom of movement of the connector housing mounting plate and all moving parts.

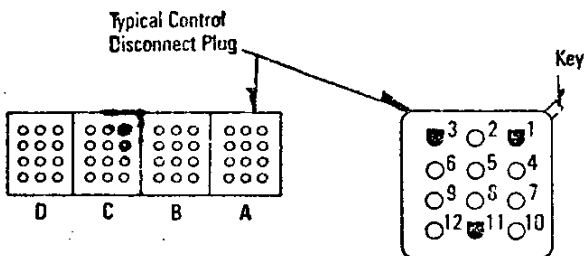


Left Side Track Assembly

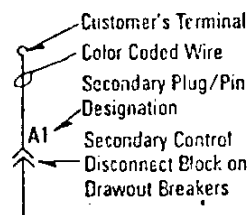


Right Side Track Assembly

Reference



Plug Layout Shown As Viewed From Front of Breaker



Wiring Terminations

Male Pin S#1268C07H10 or
Amp "MATE-N-LOK" P/N 350705-1
Female Socket S#1268C07H08 or
Amp "MATE-N-LOK" P/N 350550-1
Handcrimp Tool
Amp "MATE-N-LOK"
P/N 90298-1 for #18-20
Extraction Tool
Amp "MATE-N-LOK" P/N 458994-1
or S# 1285C01H14

Westinghouse Electric Corporation

Low Voltage Breaker Division, Beaver, PA 15009

Printed in U.S.A.