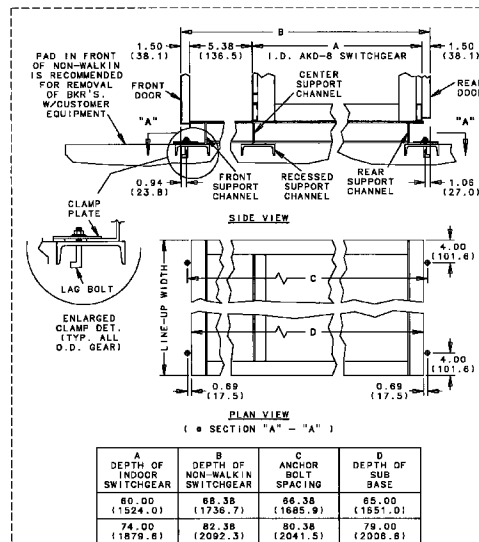
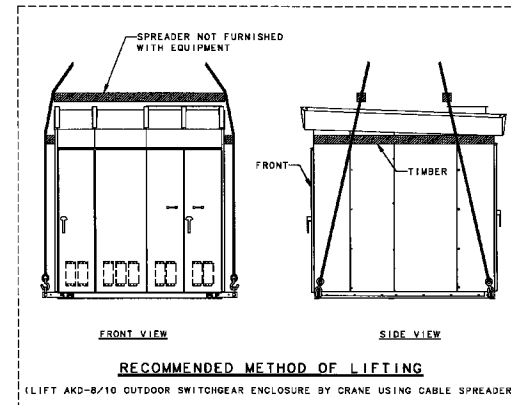
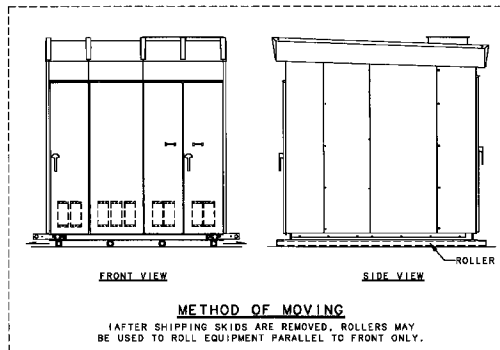
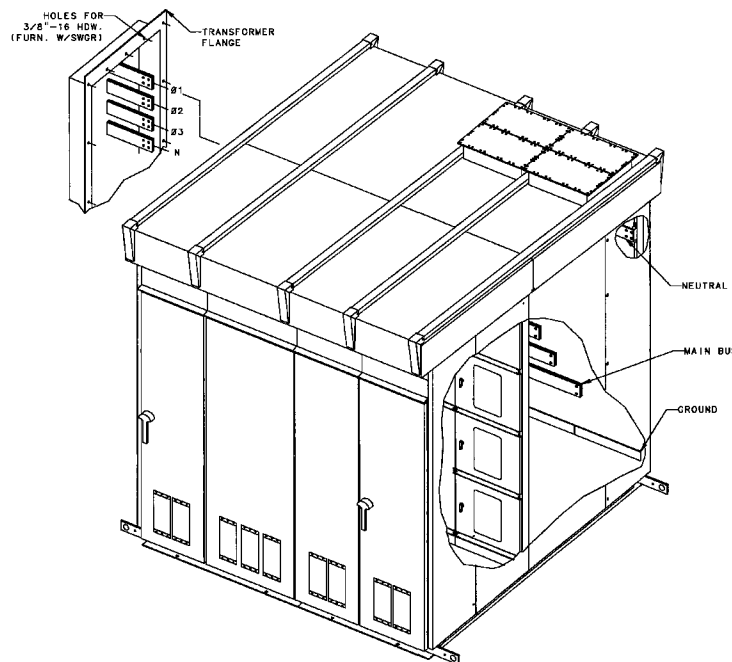


## NOTES:

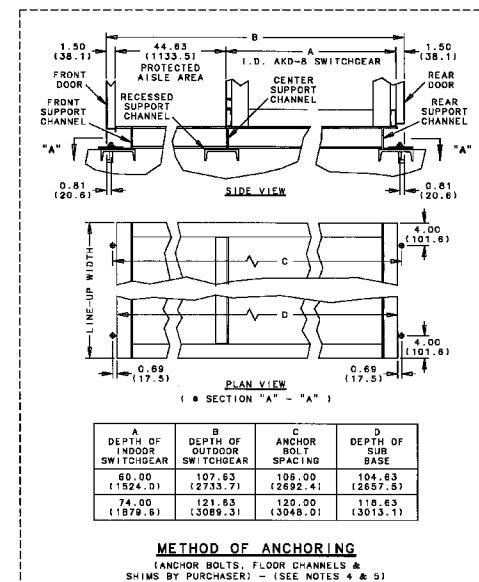
1. REFER TO THE SUMMARY AND FRONT VIEW ARROW. DRAWING FOR ADDITIONAL INFORMATION AND MAT'L. BEING FURNISHED. REFER TO EQUIP. INSTALLATION & MAINTENANCE INSTRUCTION MANUAL GEH-5687, FOR ADDITIONAL INSTRUCTIONS DURING INSTALLATION.
2. ALL SHIPPING SPLIT HARDWARE TO BE DISASSEMBLED BEFORE ADJACENT SHIPPING PACKAGES ARE SET IN PLACE. REASSEMBLE TO SECURE SHIPPING SPLIT.
3. REMOVE TOP WIRE TROUGH COVER ON UNITS AT EITHER SIDE OF SHIP SPLIT TO CONNECT ALL SHIP SPLIT INTERCONNECT WIRING. DO NOT OPERATE BREAKER HOIST W/TOP WIRE TROUGH COVERS REMOVED.
4. "C" CHANNELS ARE RECOMMENDED, BUT NOT REQ'D., FOR ANCHORING AS LONG AS A LEVEL FLOOR SURFACE IS PROVIDED. FOR SEISMIC ANCHORING, "C" CHANNELS ARE REQ'D. EMBEDDED FLOOR CHANNELS SHOULD BE SET LEVEL WITH EACH OTHER AND SHOULD BE LEVEL OVER THEIR ENTIRE LENGTH. THE FINISHED FLOOR SHOULD HAVE A SLIGHT PITCH AWAY FROM THE MOUNTING CHANNELS AND IN NO CASE SHOULD THE FINISHED FLOOR BE HIGHER THAN THE CHANNELS. FLOOR CHANNELS MUST BE DRILLED AND TAPPED. (WELD NUTS MAY BE WELDED INSIDE OF CHANNEL).
5. WHERE REQUIRED BY THE JOB SPECIFICATIONS, THE EQUIPMENT MAY BE FILLET WELDED TO THE FLOOR CHANNELS THROUGH THE REAR ANCHOR HOLES AND ALONG THE ENTIRE FRONT EDGE OF THE LINE-UP WITH A 1/8" BEAD, 1" LONG, APPROXIMATELY EVERY 8".
6. ALL DIMENSIONS SHOWN IN PARENTHESIS ARE METRIC.



**METHOD OF ANCHORING (OUTDOOR NON-WALK-IN)**  
(ANCHOR BOLTS, FLOOR CHANNELS & SHIMS BY PURCHASER) - (SEE NOTES 4 & 5)



**TYPICAL VIEW OF AKD-8/AKD-10 SWITCHGEAR**



**METHOD OF ANCHORING**  
(ANCHOR BOLTS, FLOOR CHANNELS & SHIMS BY PURCHASER) - (SEE NOTES 4 & 5)

AKD8 SWITCHGEAR/AKD10 SWITCHGEAR			
INSTALLATION DWG-OUTDOOR			
ENGR.	SMY	DESIGNER	D. MARLETTE
ISSUED		RECD	S.O.
MADE BY	APPROVAL	SWITCHGEAR	0176D7426
DATE 2-22-91		BURLINGTON, IA	CONTON SH. 2 SH. NO. 1

GE ED&C

FILE NAME CALMA

THIS REV. 5  
DRAWING NOT TO SCALE  
CONTON SH. 2 SH. NO. 1

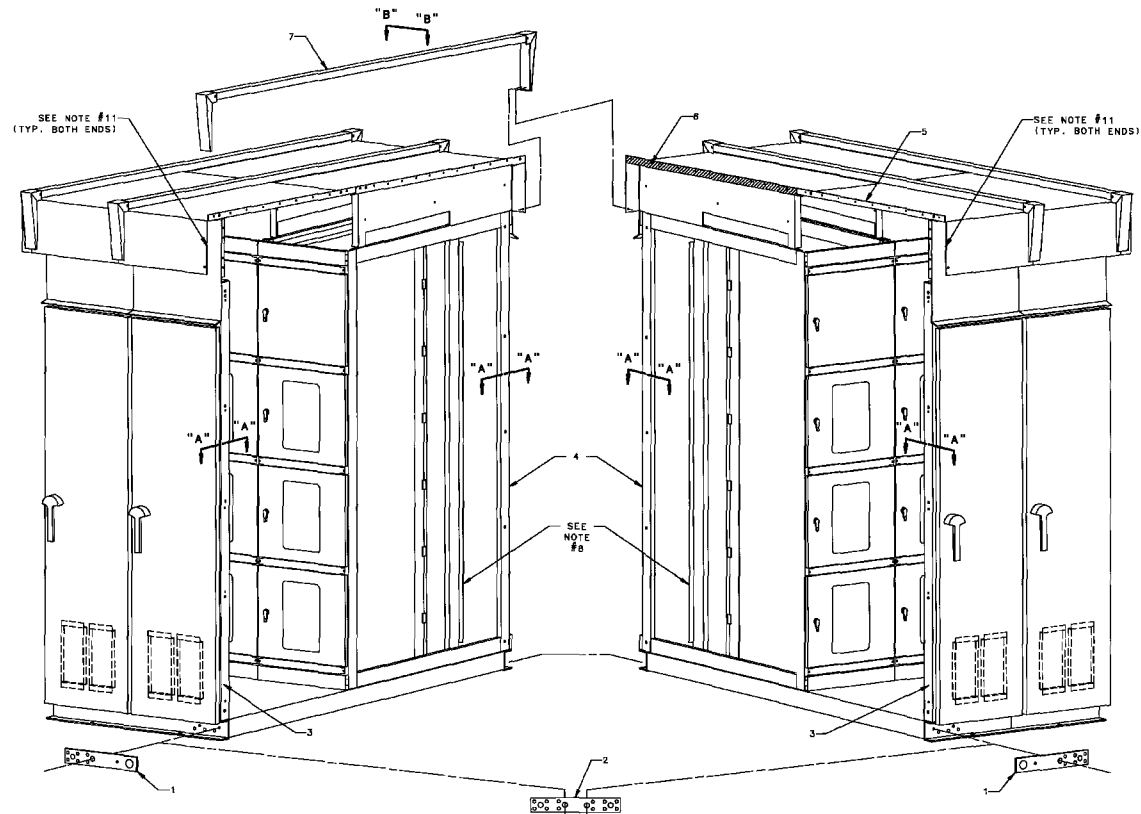
AKD8 SWITCHGEAR/AKD10 SWITCHGEAR  
INSTALLATION DWG-OUTDOOR  
RECD. S.O.

REV. 1 2 3 4 5 6 7 8 9 10 11 12 13 14 15 16 17 18 19 20 21 22 23 24 25 26 27 28 29 30 31 32 33 34 35 36 37 38 39 40 41 42 43 44 45 46 47 48 49 50 51 52 53 54 55 56 57 58 59 60 61 62 63 64 65 66 67 68 69 70 71 72 73 74 75 76 77 78 79 80 81 82 83 84 85 86 87 88 89 90 91 92 93 94 95 96 97 98 99 100

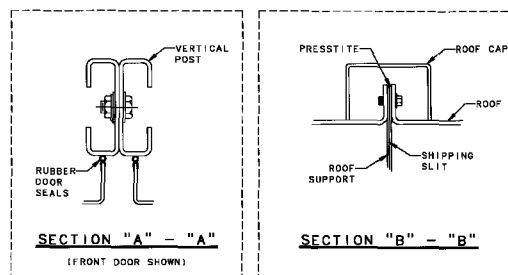
# OUTDOOR EQUIPMENT:

THE RECOMMENDED PROCEDURE FOR INSTALLING SWITCHGEAR EQUIPMENT SUPPLIED IN AN OUTDOOR ENCLOSURE IS AS FOLLOWS:

1. POSITION THE EQUIPMENT IN ITS FINAL LOCATION. IF THE EQUIPMENT LINE-UP WAS SPLIT INTO TWO OR MORE SHIPPING SECTIONS, IT IS NECESSARY TO FIRST MATCH LINE-UPS & REASSEMBLE THE MULTIPLE SECTIONS INTO ONE INTEGRATED EQUIPMENT.
2. AFTER REMOVAL OF THE LIFTING PLATES (1), APPLY THE PRESSTITE GASKET MATERIAL (6) TO THE MOUNTING SURFACE OF THE ROOF FLANGE (5). THE GASKET MATERIAL IS SUPPLIED WITH THE EQUIPMENT.
3. ALIGN THE TWO SECTIONS WITH THE MATING SURFACES BUTTED TOGETHER.
4. THE MATING SECTIONS OF THE OUTDOOR ENCLOSURE SHOULD BE BOLTED TOGETHER INCLUDING THE FRONT (3) AND REAR (4) VERTICAL POSTS AND THE ROOF FLANGE (5). EACH VERTICAL POST WILL REQUIRE (QTY OF 10) 3/8"-16NC X 1" BOLT ASSEMBLIES (SEE SECTION A-A). THE ROOF FLANGE WILL REQUIRE (EITHER QTY OF 11 OR 12) 3/8"-16NC X 1/2" BOLT ASSEMBLIES. THE BOLTS SHOULD BE TIGHTENED WITH A TORQUE OF 25-30 FT.-LBS. SECTION B-B IS A CROSS SECTIONAL VIEW OF THE ASSEMBLED ROOF JOINT.
5. TIE THE BASE OF THE OUTDOOR HOUSING TOGETHER USING THE SPLICE PLATES (2) SUPPLIED WITH THE EQUIPMENT AND THE BOLTS WHICH PREVIOUSLY SECURED THE LIFTING PLATES (1).
6. INSTALL THE ROOF CAP (7) OVER THE SEALED AND BOLTED ROOF FLANGE ASSEMBLY. THE ROOF CAP IS SECURED IN PLACE WITH (QTY OF 2) 1/4"-20NC X 1/2" THREAD FORMING BOLTS EACH AT THE FRONT AND THE REAR ENDS OF THE CAP. THESE BOLTS SHOULD BE TIGHTENED WITH A TORQUE OF 7-8 FT.-LBS.
7. IF A TRANSFORMER IS INCLUDED IN THE EQUIPMENT LINE-UP, THE FLANGE SHOULD BE CONNECTED TO THE SWITCHGEAR OPENING USING THE GASKET, CEMENT AND FASTENING MATERIAL SUPPLIED WITH THE SWITCHGEAR EQUIPMENT.
8. THE SWITCHGEAR WITHIN THE OUTDOOR ENCLOSURE SHOULD BE JOINED TO ITS MATING SECTIONS IN THE MANNER DESCRIBED FOR INDOOR EQUIPMENT.
9. THE INSTALLATION OF THE TRANSFORMER CONNECTION STRAPS TO THE INCOMING BUS SHOULD BE DONE IN ACCORDANCE WITH THE INSTRUCTIONS FURNISHED WITH THE INDOOR EQUIPMENT.
10. THE INTERCONNECTION OF CONTROL WIRING ACROSS SHIPPING SPLITS SHOULD BE DONE IN ACCORDANCE WITH THE INSTRUCTIONS FURNISHED WITH THE INDOOR EQUIPMENT.
11. AFTER COMPLETION OF THE SHIPPING SPLIT ASSEMBLY ANY SMALL OPENINGS SHOULD BE SEALED WITH G.E. CLEAR SILICONE CAULKING CEMENT.



SHIPPING SPLIT ASSEMBLY - OUTDOOR ENCLOSURE



- ITEM 1 - LIFTING PLATES (QTY OF 8)  
12 FRT. & 2 RR. EACH SIDE  
OF SHIPPING SPLIT) (REAR  
PLATES NOT SHOWN)  
ITEM 2 - SPLICE PLATE (QTY OF 4)  
ITEM 3 - FRONT VERTICAL POST  
ITEM 4 - REAR VERTICAL POST  
ITEM 5 - ROOF FLANGE  
ITEM 6 - GASKET  
ITEM 7 - ROOF CAP

AKDB SWITCHGEAR/AKD10 SWITCHGEAR			
INSTALLATION DWG-OUTDOOR			
ENGR.	SMY	DESIGNER	C.E. DROSTE
ISSUED	REGN.	S.O.	
MADE BY	APPROVAL	SWITCHGEAR	0176D7426
DATE 6-20-95	BURLINGTON, IA	CONTON SH. 3	SH. NO. 2

# NOTES:

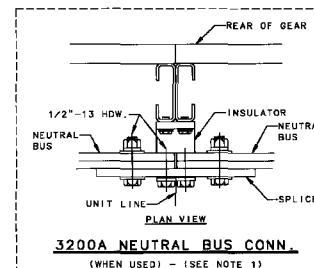
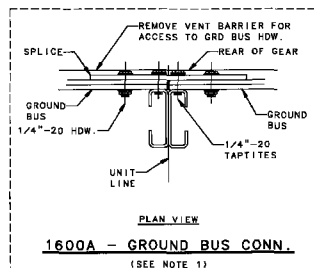
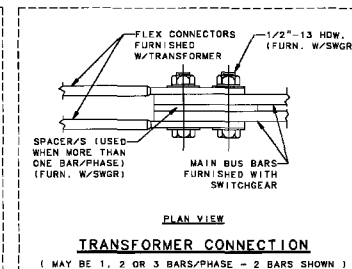
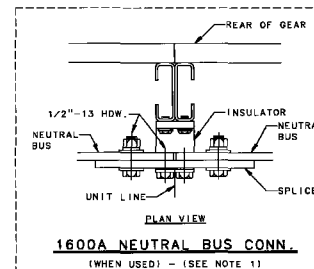
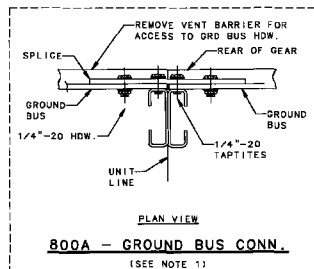
- GROUND BUS SPLICE AND HARDWARE WILL NORMALLY BE SHIPPED ASSEMBLED TO EITHER SIDE OF ADJACENT SHIPPING PACKAGES. NEUTRAL SPLICE, HARDWARE AND INSULATORS (WHEN FURNISHED) WILL NORMALLY BE SHIPPED ASSEMBLED TO EITHER SIDE OF ADJACENT SHIPPING PACKAGES.
- MAIN BUS BARS ACROSS SHIPPING SPLITS ARE PACKAGED AND SHIPPED DISASSEMBLED. EACH BAR IS MARKED WITH PHASE AND SECTION DESIGNATION. HARDWARE WILL NORMALLY BE SHIPPED ASSEMBLED ON POWER CONNECTORS IN SWITCHGEAR. FOR ALUMINIUM BUS REFER TO GEN-5607, PAGE 43.
- ALL DIMENSIONS SHOWN IN PARENTHESIS ARE METRIC.

GE ED&C

FILE NAME CALMA

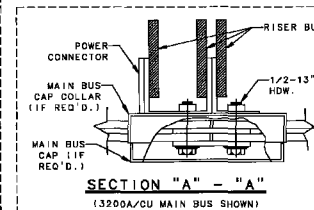
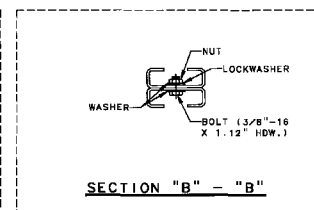
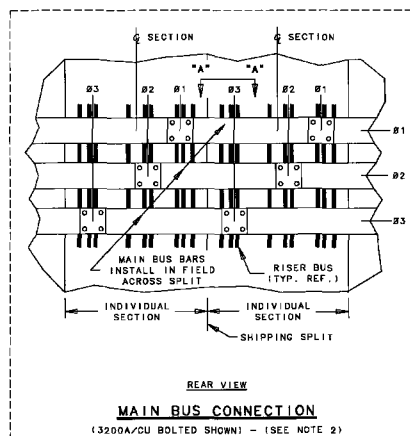
THIS REV. 1  
DRAWING NOT TO SCALE  
0176D7426  
CONTOUR SH FI SH NO. 3

AKDB SWITCHGEAR/AKD10 SWGR WINDOW NO. CALMA  
INSTALLATION DWG-OUTDOOR  
RECN. S.O.



TORQUE VALUES FOR LOW VOLTAGE EQUIPMENT HARDWARE (COPPER OR ALUMINIUM)	
BOLT SIZE	FOOTPOUNDS W/MACHINE NUT, LOCKWASHER, FLATWASHER &/OR BELLVILLE WASHER
1/4"-20	7-9
3/8"-16	25-30
1/2"-13	35-40

**TORQUE VALUES**



**STORAGE PRECAUTIONS**

BEFORE STORING UNPACK SUFFICIENTLY TO CHECK FOR CONCEALED DAMAGE. IF DAMAGED NOTIFY SHIPPER IMMEDIATELY. IF FREE OF DAMAGE, RESTORE PACKING UNTIL READY FOR INSTALLATION.

STORE INDOORS IN A CLEAN, DRY AREA. PREFERABLY CLOSE TO THE INSTALLATION POINT.

PROTECT THE EQUIPMENT FROM MECHANICAL DAMAGE AND ANY CONTACT WITH, OR EXPOSURE TO, CORROSIVE FUMES, LIQUIDS, SALTS, OR CONCRETE.

IF STORED IN A COOL OR DAMP AREA, HEAT SHOULD BE PROVIDED TO KEEP THE EQUIPMENT DRY. WHEN HEATERS ARE SUPPLIED, THIS MAY BE ACCOMPLISHED BY MAKING TEMPORARY POWER CONNECTION TO THE HEATERS INSTALLED IN THE EQUIPMENT. ON ALL OTHER EQUIPMENT, TWO STANDARD 120 VOLT LAMPS RATED AT 100 WATTS EACH, CAN BE USED INSIDE EACH VERTICAL SECTION.

FAILURE TO STORE AND PROTECT THE EQUIPMENT PROPERLY CAN CAUSE SERIOUS DAMAGE AND WILL VOID WARRANTY.

READ ENCLOSED INSTALLATION INSTRUCTIONS BEFORE PROCEEDING

750100100 P101

## STORAGE PRECAUTIONS LABEL

AKDB SWITCHGEAR/AKD10 SWITCHGEAR INSTALLATION DWG-OUTDOOR			
ENGR.	SWY	DESIGNER	C.E. DROSTE
ISSUED	RECN	S.O.	
MADE BY	APPROVAL	SWITCHGEAR	0176D7426
DATE 6-20-96		BURLINGTON, IA	CONTOUR SH FI SH NO. 3