

Class 300 Equipment APM 2000 Paralleling Module

APPLICATION

The APM 2000 Paralleling Module provides paralleling capability for the APR 63-5 and APR 125-5; and the XR2001, XR2002, and XR2004 (except XR2004V) series voltage regulators, allowing paralleled three phase generators to share reactive load and reducing circulating current between the generators.

DESCRIPTION

The APM 2000 Paralleling Module uses an external current transformer installed in the generator line B to sense the load. The resultant signal is converted to a voltage that is vectorially added to the sensing input voltage of the regulator to provide reactive droop compensation or reactive differential compensation for the generators.

FEATURES

- Low 5 VA burden
- Compact size
- Provides either reactive droop or reactive differential (cross current) compensation
- Adjustable droop of 5%
- Accepts either 1 amp or 5 amp current transformer secondary ratings
- Provision for external Unit-Parallel Switch
- Rugged construction
- CSA certified
- UL recognized

ADDITIONAL INFORMATION

INSTRUCTION MANUAL

Request Publication 9147300990

**DESCRIPTION and
SPECIFICATIONS**
this page

OUTLINE DRAWINGS
back page

**INTERCONNECT
DRAWING**
back page

**ORDERING
INFORMATION**
back page



ROUTE 143, BOX 269 HIGHLAND, ILLINOIS 62249, U.S.A. PHONE 618-654-2341 FAX 618-654-2351

SPECIFICATIONS

CURRENT TRANSFORMER REQUIREMENTS

Secondary Rating	Secondary Current at Rated Generator Load	Minimum Burden
1A	0.7 - 1.0 A	5 VA
5A	3.5 - 5.0 A	5 VA

VOLTAGE DROOP:

Adjustable to 5% or more for 0.8 p.f. load.

OPERATING TEMPERATURE RANGE:

-40° F (-40°C) to +158°F (+70°C)

SHOCK:

Withstands 15 Gs in each direction

VIBRATION:

Withstands the following vibration spectrum

Frequency	Acceleration
5-26 Hz	1.36 G
26-52 Hz	.036 inch displacement
52-260 Hz	5 G

FINISH:

Dark Gray, lusterless, textured, baked enamel

ORDERING INFORMATION

Specify Basler Model APM 2000 Paralleling Module. For "Unit/Parallel" switch, select Basler P/N 05407 rotary two-position switch. Select current transformer ratio that provides secondary current within range shown above, and with a burden rating greater than 5 VA.

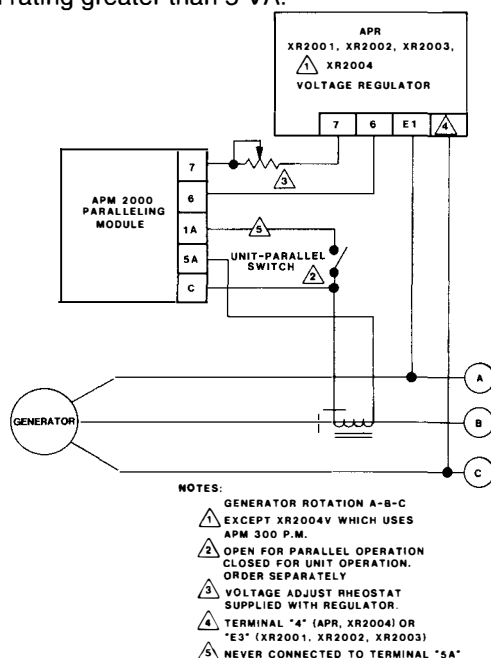


Figure 1 - Typical Interconnection Diagram

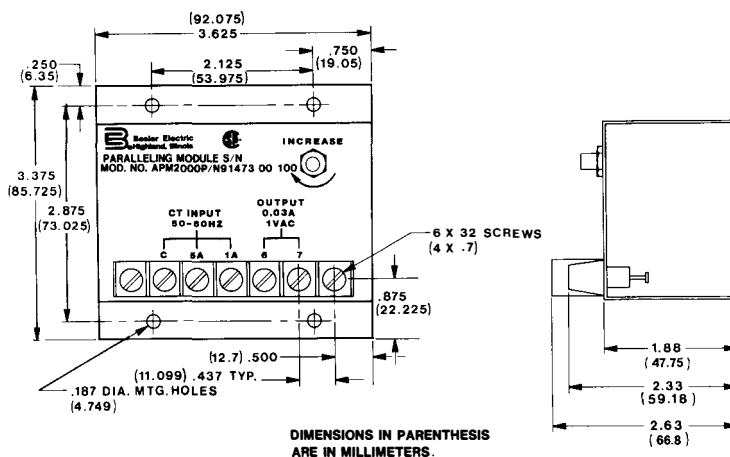


Figure 2 - Outline Drawing

Basler Electric



ROUTE 143, BOX 269, HIGHLAND, ILLINOIS U.S.A. 62249
PHONE 618-654-2341 FAX 618-654-2351

P.A.E. Les Pins, 67319 Wasselonne Cedex FRANCE
PHONE (33-3-88) 87-1010 FAX (33-3-88) 87-0808

<http://www.basler.com>, info@basler.com