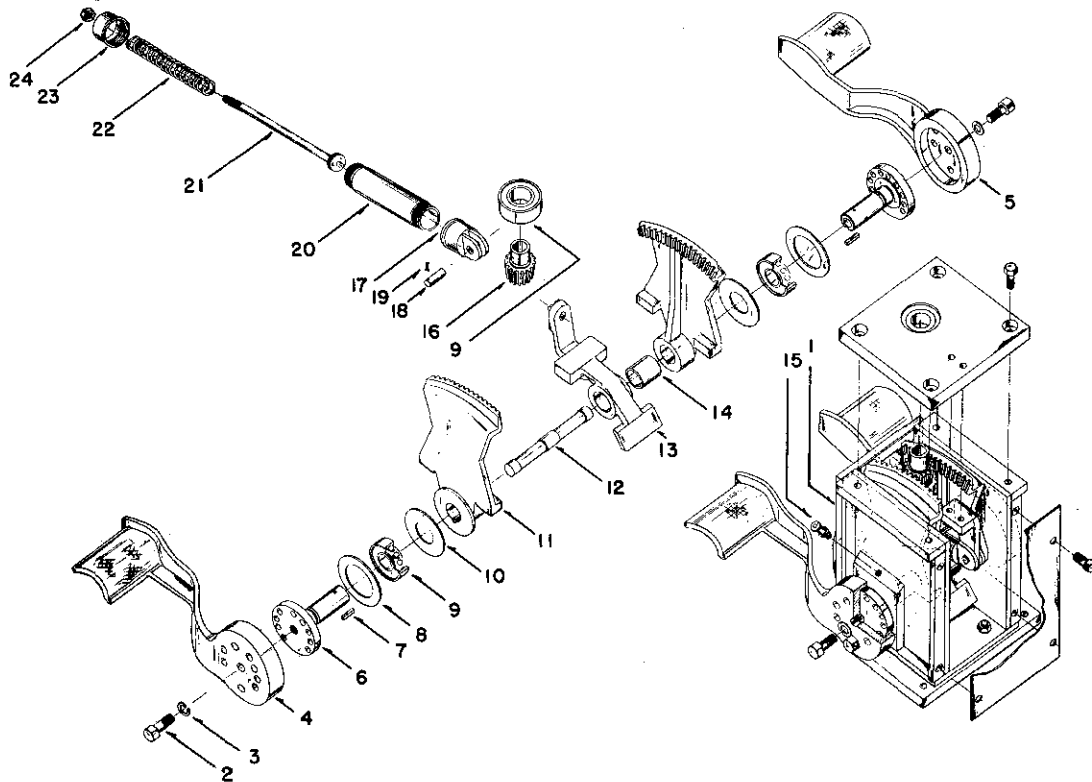


## FOOT OPERATED MECHANISM FOR SM MASTER SWITCHES



Ref No.	Description of Parts	No. Req
1	Mechanism Complete. . . . .	1
2	Hex. Head Bolt 1/2"-13x1-1/8" . . . . .	4
3	Lock Washer 1/2" . . . . .	4
4	Foot Pedal - R.H. . . . .	1
5	Foot Pedal - L.H. . . . .	1
6	Hub . . . . .	2
7	Key for Hub . . . . .	2
8	Dirt Shield . . . . .	2
9	Ball Bearing . . . . .	3
10	Washer . . . . .	2
11	Segments . . . . .	2
12	Shaft . . . . .	1
13	Stop and Spring Support . . . . .	1
14	Sleeve Bearing for Above . . . . .	1
15	Oil Cup. . . . .	2
16	Pinion . . . . .	1
17	Clevis . . . . .	1
18	Pin for Clevis . . . . .	1
19	Cotter Pin 3/32"x5/8" . . . . .	1
20	Tube. . . . .	1
21	Spring Shaft . . . . .	1
22	Spring . . . . .	1
23	Cap . . . . .	1
24	Nut - Special. . . . .	1

Hub Ball Bearings and Washer (Ref. 10) not used prior to 1-1-48

## ORDERING INSTRUCTIONS

Name the part and give the complete nameplate reading. State whether shipment is desired by express, freight or parcel post. Send all orders or correspondence to nearest Sales Office of the Company. Small orders should be combined so as to amount to a value of at least \$1.00 net. Where the total of the sale is less than this, the material will be invoiced at \$1.00.

**WESTINGHOUSE ELECTRIC CORPORATION**

**BUFFALO PLANT**

**BUFFALO, N. Y.**