

Westinghouse

**Elapsed Time Meters**

With or Without Reset

Type GH-332, 2½-Inch

Types GH-352 and BH-351, 3½-Inch

Application

Westinghouse GH and BH elapsed time meters indicate the total time that a particular circuit is energized. They are used for maintenance scheduling of electrical equipment (including diesel generators, motors, welders, and radio and television transmitters) and tube replacement programs.

Each consists of synchronous motor and cyclometer type register. When energized by the circuit being monitored, the motor drives the register (which has six digit wheels) to indicate up to 99,999.9 hours or minutes as a highly visible numerical strip across the center of the dial.

BH-351 meters are housed in an attractive molded case and diecast cover assembly which matches the appearance of Westinghouse conventional panel instruments. They can be mounted from either the front or back of the panel, and are available with or without reset knob.

Type GH-332 and GH-352 meters have a similar mechanism housed in a thermosetting case with a clear acrylic plastic cover. They are identical in appearance with Westinghouse 20/20 custom panel instruments. They harmonize with most other modern panel mounted components. A bezel kit is used for rear-of-panel mounting. The bezel mounted meters may be illuminated from behind the panel.

Specifications

Insulating Rating: 750 volts

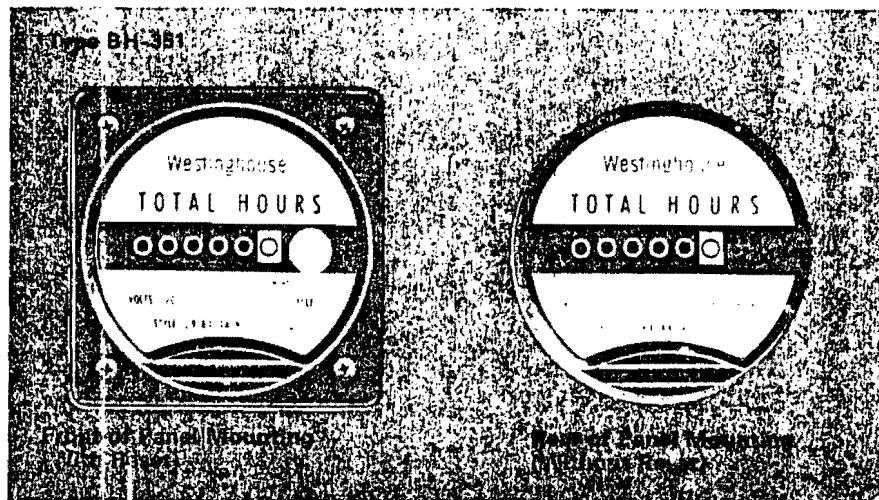
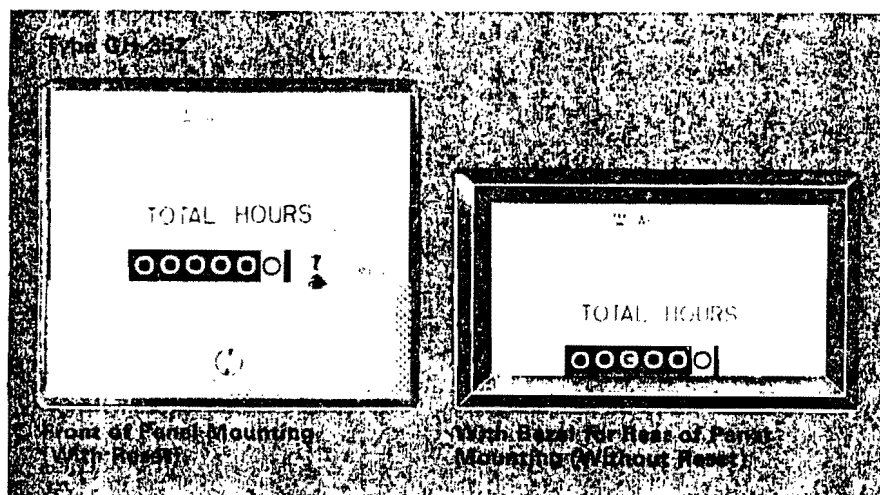
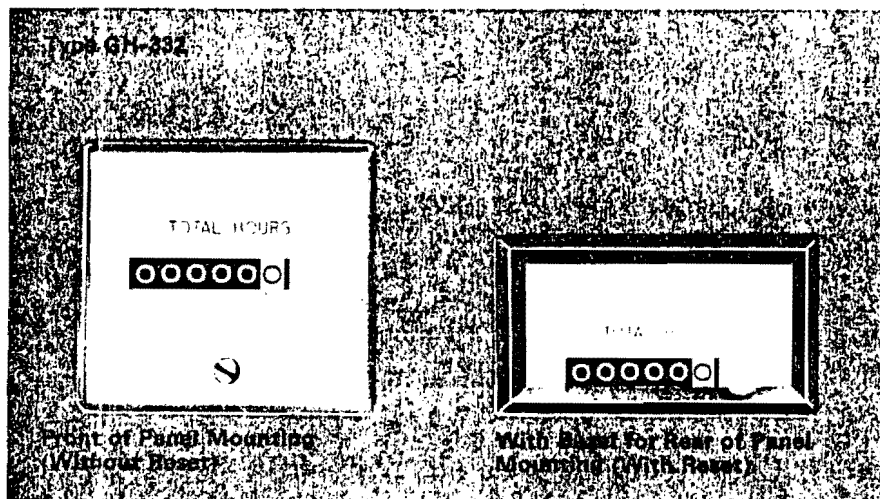
Range: 0-99,999.9 hours or minutes

Net Weight: 1 pound

Shipping Weight: 2 pounds

Available Ratings

Register Indication	Volts	Frequency: Hertz
0-99,999.9 hours	120	50
0-99,999.9 hours	120	60
0-99,999.9 hours	240	60
0-99,999.9 hours	480	60
0-99,999.9 minutes	120	60



September, 1970

Supersedes DB 43-355 dated January, 1968

E. D. C/2037/DB

Elapsed Time Meters

With or Without Reset

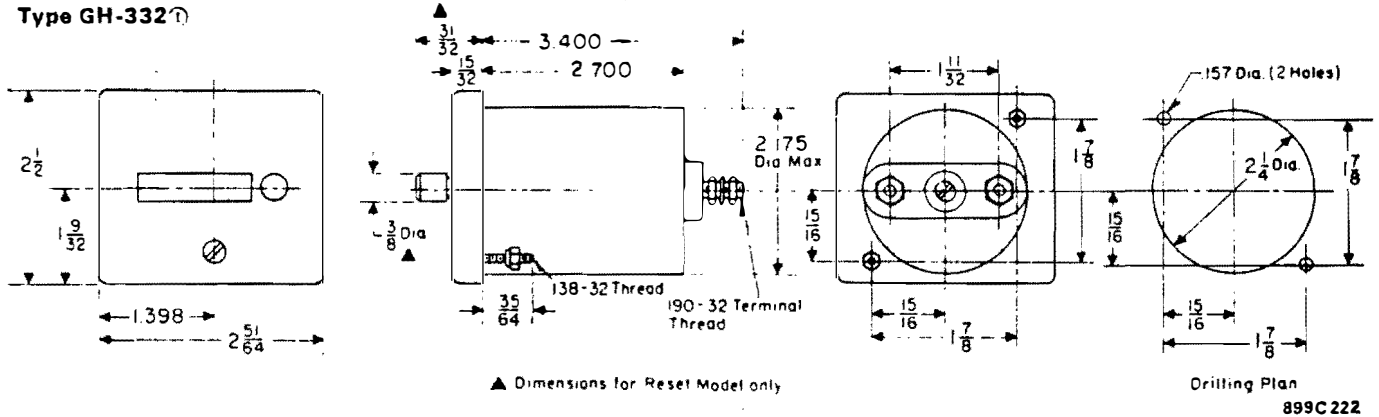
Type GH-332, 2½-Inch

Types GH-352 and BH-351, 3½-Inch

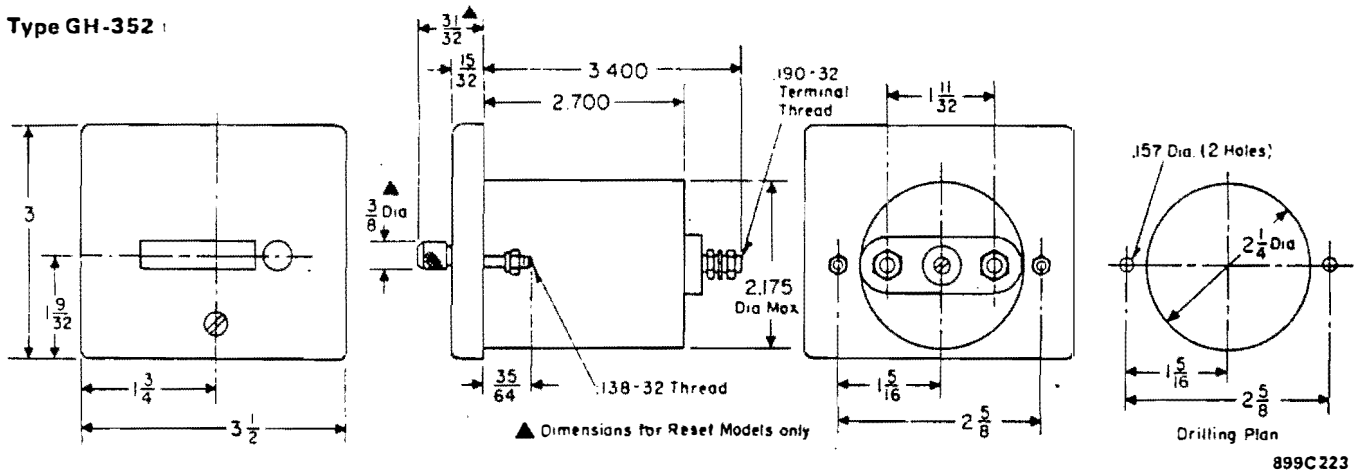
Outline Dimensions and Drilling Plans

Dimensions are approximate only.

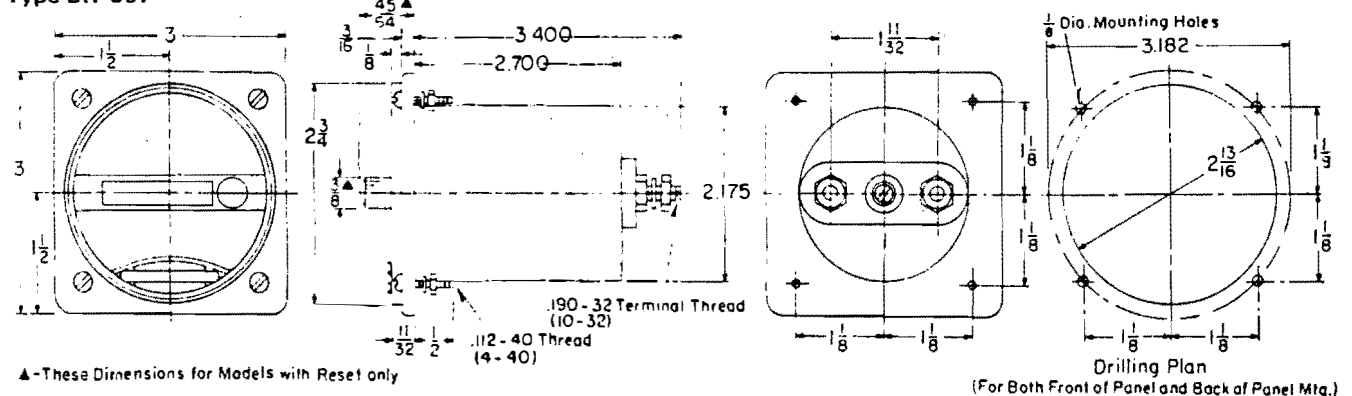
Type GH-332



Type GH-352



Type BH-351



① GH-332 and GH-352 bezel mounting is same as equivalent 20/20 types. See DB 43-220.

409C791

Further Information

Prices and Ordering Information: PL 43-305

Westinghouse Electric Corporation

Relay-Instrument Division: Newark Plant, Newark, N. J.

Printed in USA