

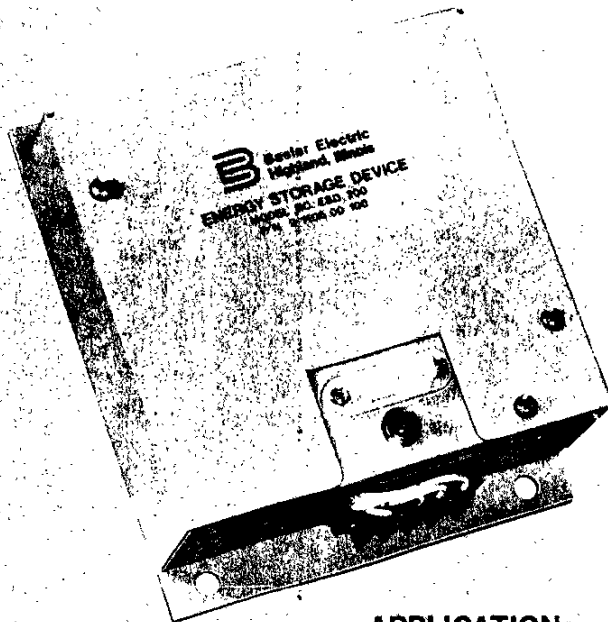
Class 200 Equipment
ESD 200
ENERGY STORAGE DEVICE

LARRY HOUGHIN 9NS

\$20.00
 -20%

11/16/77

Regards
 Dale Gormley



FEATURES:

- Converts bus voltage to D.C. for tripping power.
- Tripping power maintained for up to 72 hours after loss of A.C. input.
- Convenient front panel push-to-test button and indicator.
- Compact package.
- Available from stock.
- 18 month warranty.

APPLICATION:

The Basler ESD 200 Energy Storage Device can be used where a station battery source is not available to provide circuit breaker trip power. The ESD 200 converts bus voltage to DC and stores energy for breaker tripping for periods up to 72 hours after loss of bus voltage. A typical application is shown in Figure 1.

DESCRIPTION:

Power input to the ESD is 230 VAC. This input is rectified and used to charge the energy storage capacitor to approximately 330 VDC. A nickel cadmium battery is also charged from this A.C. source. As long as the A.C. input is applied, the output capacitor and the battery continue to be charged in this manner. If the A.C. fails, a battery powered oscillator circuit and an associated step-up transformer act as the capacitor charging source. Energy for breaker tripping is maintained for as long as 72 hours after a loss of A.C. voltage.

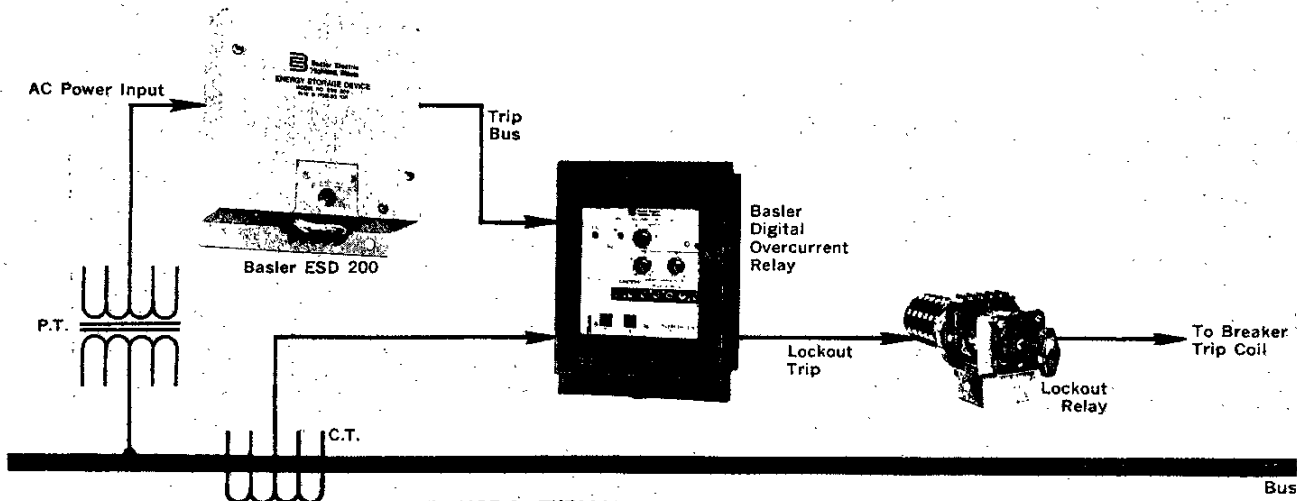


FIGURE 1-TYPICAL APPLICATION

B Basler Electric
 Highland, Illinois

UKO-1
 8-76

SPECIFICATIONS:

● INPUT POWER

Voltage.....190-250 VAC
Frequency.....50/60 Hz
Phase.....Single
Burden.....2 VA Maximum

- **OUTPUT:** 380-450 vdc with a fully charged battery. This output is maintained for a minimum of 72 hours after A.C. power is interrupted.

- **HEAT DISSIPATION:** 2.0 watts.
- **WEIGHT:** 4.5 pounds net; 6 pounds shipping.
- **DIMENSIONS:** See Figure 3.

HOW TO ORDER:

Specify Basler Electric ESD 200 Energy Storage Device.

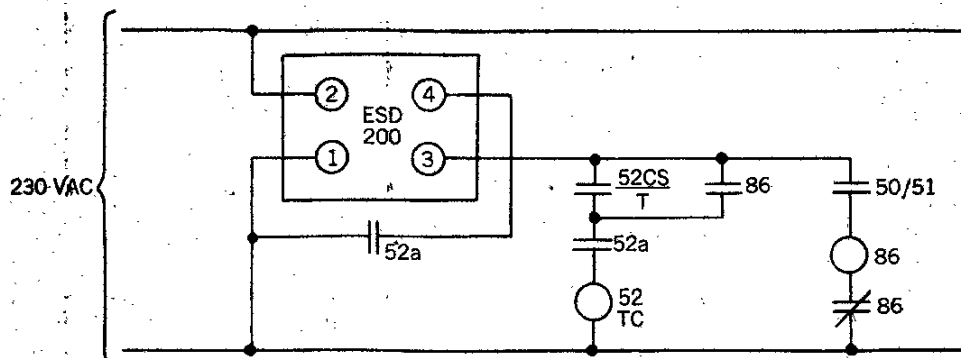


FIGURE 2—TYPICAL INTERCONNECTION DIAGRAM

Legend

52 Power Circuit Breaker
a Breaker Auxiliary Contact
TC Breaker Trip Coil
86 Lockout Relay
50/51 Overcurrent Relay
 $\frac{CS}{T}$ Control Switch, Trip

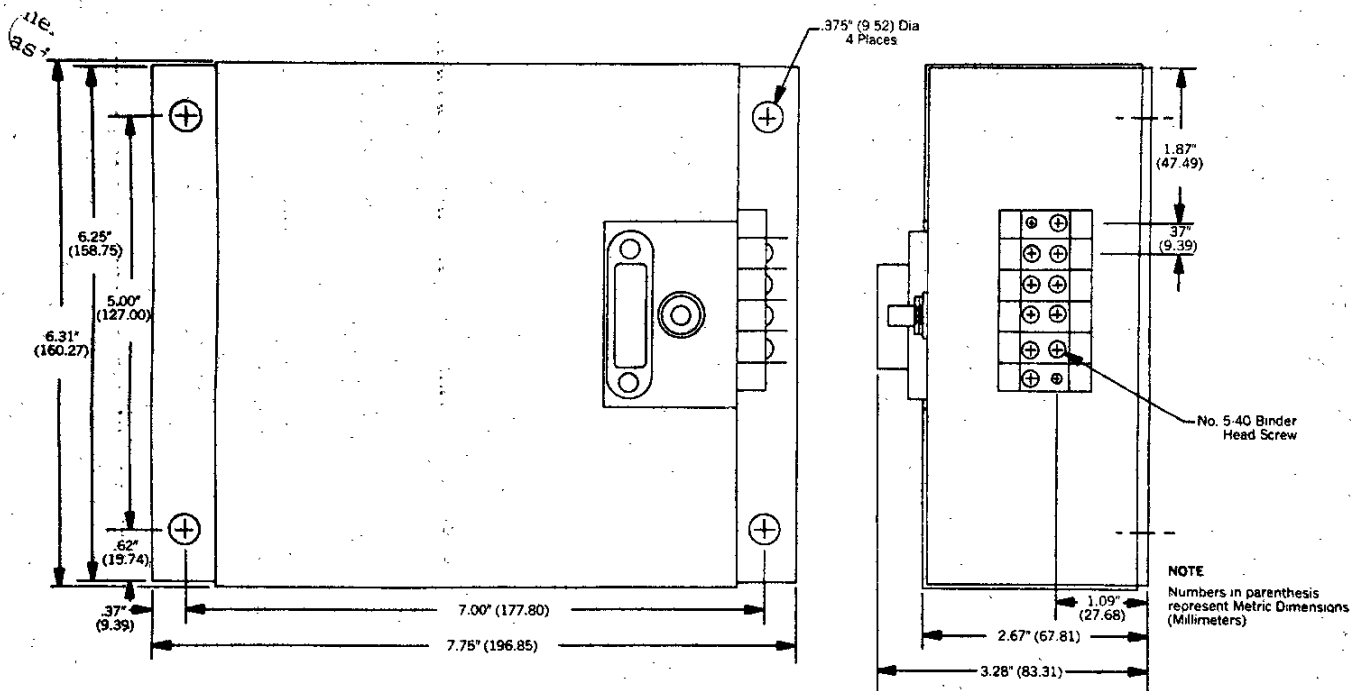


FIGURE 3--OUTLINE DRAWING

Note: "All drawings and data subject to change without notice"



Basler Electric
Highland, Illinois

BOX 269 HIGHLAND, ILLINOIS 62249

PHONE 618-654-2341

TWX 910-996-2522