



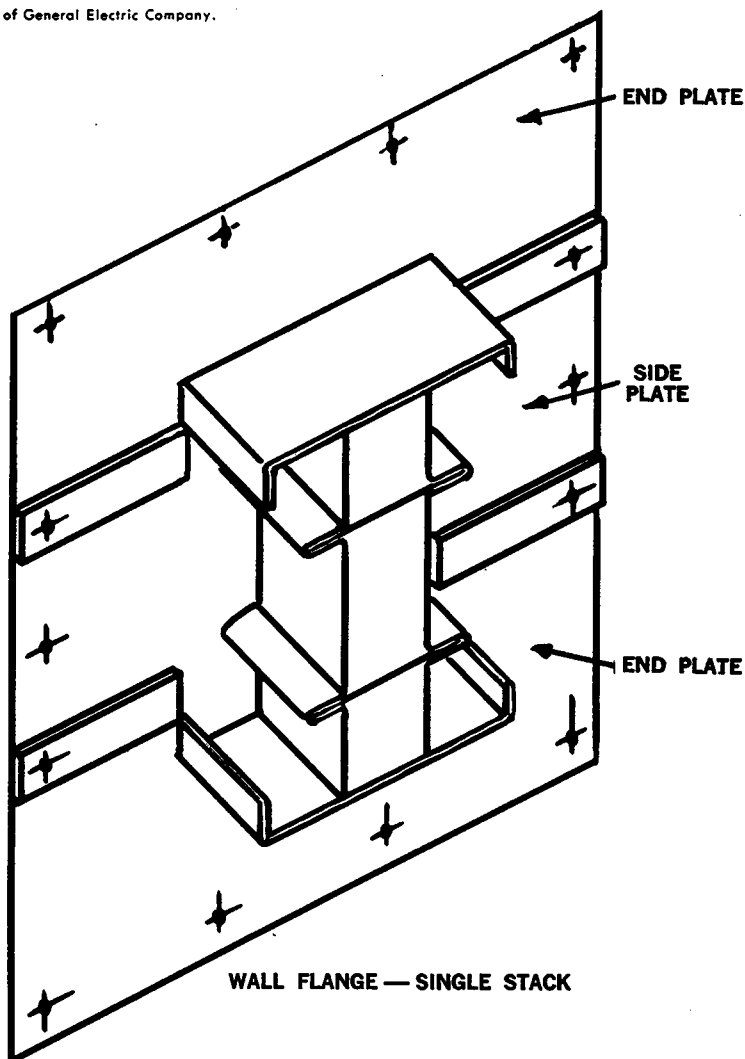
# ARMOR-CLAD<sup>\*</sup>

## WALL OR ROOF FLANGE FOR FEEDER TYPE BUSWAY

The use of screw anchors in masonry or concrete walls is recommended although other methods are suitable. Other methods of mounting require essentially the same steps as outlined for screw anchors.

1. Hold End Plate in position against busway and wall, and mark mounting hole locations. Repeat, using other plate.
2. Tilt side plate to place in position. Leave approximately  $\frac{1}{16}$ " clearance between inside edges of plate and busway. Mark locations of mounting holes, using holes marked for end plates as guides. Repeat for opposite side.
3. Drill holes in wall, and insert anchors. The mounting holes in the wall flange parts are  $\frac{5}{16}$ " diameter and accept  $\frac{1}{4}$ " screws.
4. Run a continuous  $\frac{1}{4}$ " bead of 3M Co. Weatherban<sup>®</sup> 202 Butyl Sealant **between and around** all mounting holes on the wall.
5. Assemble **Side Plates first**, leaving out the corner screws. Use only flat washers under the heads of mounting screws. Weatherban<sup>®</sup> squeezed out from under the flange should be worked to form a fillet between wall and edge of flange.
6. Run a continuous bead of Weatherban<sup>®</sup> completely around the busway and at the edges of the overlapped joint.

<sup>\*</sup>Trade mark of General Electric Company.



These instructions do not purport to cover all details or variations in equipment nor to provide for every possible contingency to be met in connection with installation, operation or maintenance. Should further information be desired or should particular problems arise which are not covered sufficiently for the purchaser's purposes, the matter should be referred to the General Electric Company.

CONSTRUCTION INDUSTRIES DIVISION

GENERAL  ELECTRIC

DISTRIBUTION ASSEMBLIES DEPARTMENT